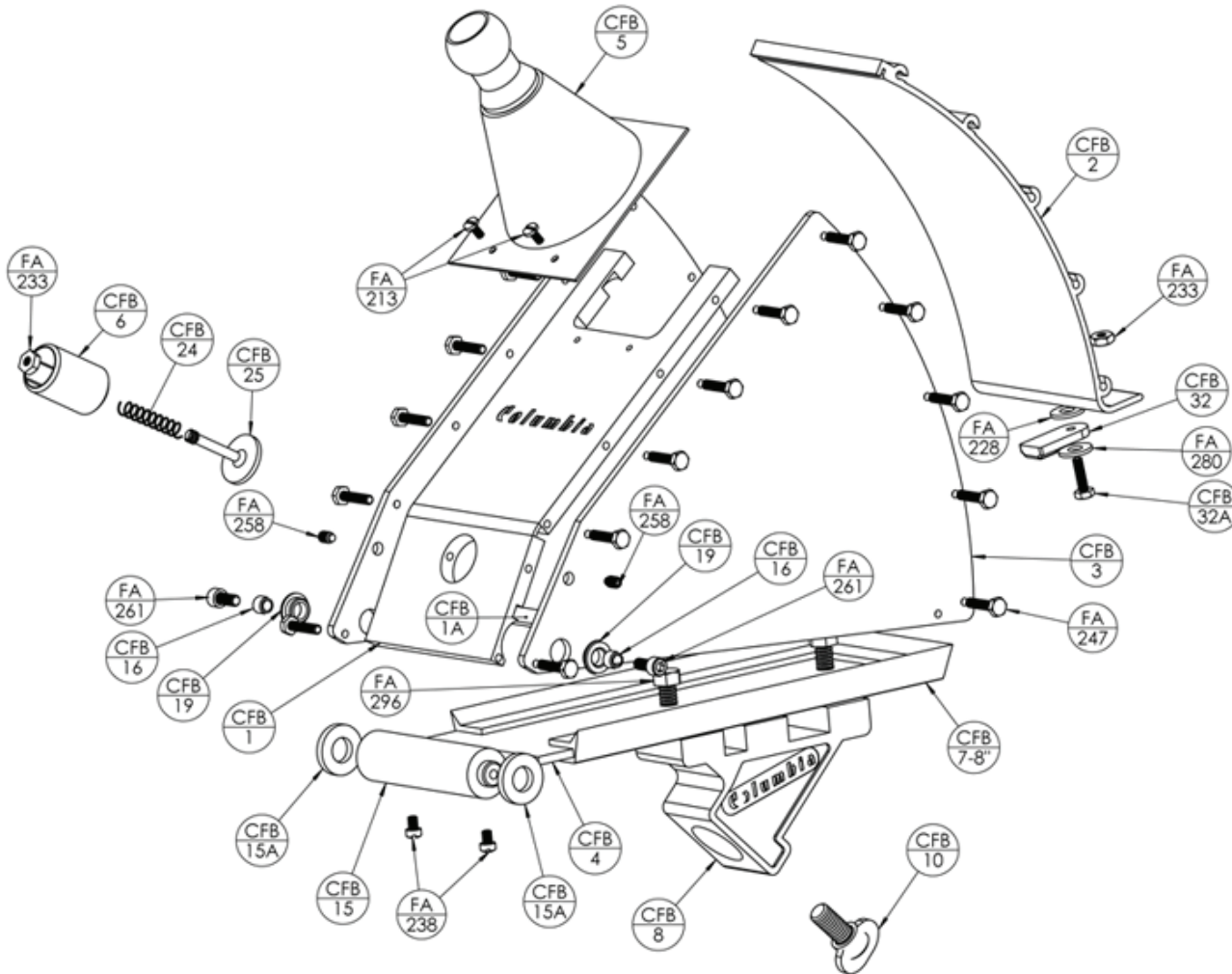




# CORNER FLUSHER BOX 7"

M7FFB  
EDI-12285

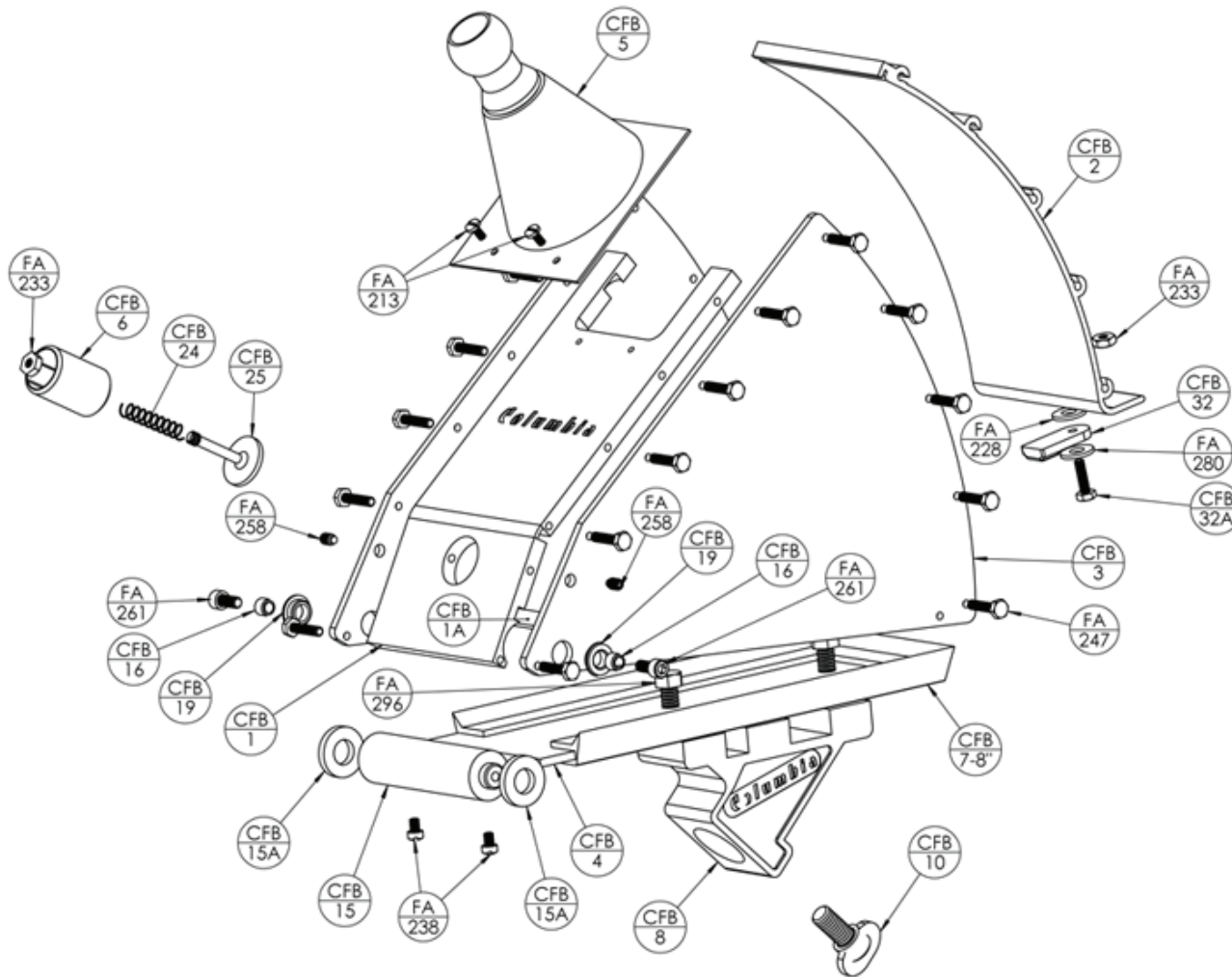


PART #	QUANTITY REQUIRED	CORNER FLUSHER BOX (7" M7CFB & 8" M8CFB)
CFB # 1	1	Rear Plate (7",8")
CFB # 1A	1	Hinge Seal
CFB # 2	1	Roll Face (7",8")
CFB # 3	1	Right Side Plate (7",8")
CFB # 3A	1	Left Side Plate (7",8")
CFB # 4	1	Door (7",8")
CFB # 5	1	Funnel Cone
CFB # 6	1	Mud Supply Valve
CFB # 7	1	Door Gasket (7",8")
CFB # 8	1	Handle Mount
CFB #10	1	5/16-18 x 3/4" Thumb Screw
CFB #11	1	Thumb Release Clip
CFB #15	1	Door Hinge
CFB #15A	2	Hinge Bushing
CFB #16	2	Bearing Sleeve - SS
CFB #19	2	Nylatron Bushings
CFB #24	1	Return Spring
CFB #25	1	Mud Supply Seal Plate & Shaft
CFB #32	1	Door Stop
CFB #32A	1	Thumb Release Clip Screw
FA # 213	2	MFA213 - 4-40 x 1/4" Binder Slot
FA # 228	1	#6 Flat Washer
FA # 231	2	6-32 x 3/8" Hex Bolt
FA # 233	1	MFA233 - 6-32 Nyloc Nut
FA # 234	1	6-32 Nyloc Jam Nut
FA # 238	2	MFA238 - 6-32 x 3/16" Fillister Slot
FA # 247	18	6-32 x 5/8" Hex Bolt (16 required for 7"CFB)
FA # 258	2	MFA258 - 8-32 x 1/4" Half Dog Set
FA # 262	2	8-32 x 1/2" Socket Head
FA # 280	1	#10 Belleville Washer
FA # 296	2	1/4-20 x 1/2" Hex Bolt
CFBA6	1	VALVE SUB-ASSEMBLY
CFB# 6	1	Mud Supply Valve Unit
CFB#24	1	Return Spring
CFB#25	1	Mud Supply Seal Plate & Shaft
FA #233	1	MFA233 - 6-32 Nyloc Nut



# CORNER FLUSHER BOX 8"

M8FFB  
EDI-12286



PART #	QUANTITY REQUIRED	CORNER FLUSHER BOX (7" M7CFB & 8" M8CFB)
CFB # 1	1	Rear Plate (7",8")
CFB # 1A	1	Hinge Seal
CFB # 2	1	Roll Face (7",8")
CFB # 3	1	Right Side Plate (7",8")
CFB # 3A	1	Left Side Plate (7",8")
CFB # 4	1	Door (7",8")
CFB # 5	1	Funnel Cone
CFB # 6	1	Mud Supply Valve
CFB # 7	1	Door Gasket (7",8")
CFB # 8	1	Handle Mount
CFB #10	1	5/16-18 x 3/4" Thumb Screw
CFB #11	1	Thumb Release Clip
CFB #15	1	Door Hinge
CFB #15A	2	Hinge Bushing
CFB #16	2	Bearing Sleeve - SS
CFB #19	2	Nylatron Bushings
CFB #24	1	Return Spring
CFB #25	1	Mud Supply Seal Plate & Shaft
CFB #32	1	Door Stop
CFB #32A	1	Thumb Release Clip Screw
FA # 213	2	<b>MFA213</b> - 4-40 x 1/4" Binder Slot
FA # 228	1	#6 Flat Washer
FA # 231	2	6-32 x 3/8" Hex Bolt
FA # 233	1	<b>MFA233</b> - 6-32 Nyloc Nut
FA # 234	1	6-32 Nyloc Jam Nut
FA # 238	2	<b>MFA238</b> - 6-32 x 3/16" Fillister Slot
FA # 247	18	6-32 x 5/8" Hex Bolt (16 required for 7"CFB)
FA # 258	2	<b>MFA258</b> - 8-32 x 1/4" Half Dog Set
FA # 262	2	8-32 x 1/2" Socket Head
FA # 280	1	#10 Belleville Washer
FA # 296	2	1/4-20 x 1/2" Hex Bolt
CFBA6	1	VALVE SUB-ASSEMBLY
CFB# 6	1	Mud Supply Valve Unit
CFB#24	1	Return Spring
CFB#25	1	Mud Supply Seal Plate & Shaft
FA #233	1	<b>MFA233</b> - 6-32 Nyloc Nut