

L-Series™

MAGNUM SHEAR™

Cut where you work, Work where you cut.

INSTRUCTION MANUAL

IMPORTANT!
READ THIS
BEFORE USE



BULLET TOOLS™
The Professional's Best Shot™



Made in the USA by Gunntech Mfg., Inc.
www.bullettools.com • USA (800) 406-8998 • Int'l (208) 772-0175



WARNING: FAILURE TO FOLLOW THESE RULES MAY RESULT IN SERIOUS INJURY! USING THIS MACHINE WITH RESPECT AND CAUTION WILL CONSIDERABLY LESSEN THE POSSIBILITY OF PERSONAL INJURY.

SAFETY RULES FOR THE MAGNUM SHEAR™

1.**READ AND UNDERSTAND THIS INSTRUCTION MANUAL BEFORE OPERATING THE MAGNUM SHEAR™.**
2.If you are not thoroughly familiar with the operation of the Magnum Shear™, obtain advice from a qualified instructor or call 800-406-8998 (International: 208-772-0175).
3.Stay alert. Do not operate while under the influence of drugs, alcohol, or medication.
4.Always wear safety approved eye protection with side shields (ANSI Z87.1).
5.Keep work area clean and free of debris.
6.Keep children and unauthorized persons away from Magnum Shear™ and work area.
7.Make sure tool is secure. Operate only on a firm substrate or solid stand.
8.Use the right tool. Do not force the Magnum Shear™ or use it for a job for which it was not designed; use only on approved materials (see list on p. 8).
9.Keep Blade sharp. A dull Blade will not perform properly.
10.Always keep hands away from Blade while operating or carrying.
11.Do not alter or misuse this tool. The Magnum Shear™ is precision built; modifications not specified in this manual may result in a dangerous condition.
12.Maintain Magnum Shear™ with care. Keep Blade sharp and clean. Follow instructions for lubricating and changing accessories.
13.Use only recommended accessories. The use of improper accessories may cause hazards or injury.
14.Never leave the Magnum Shear™ unattended. Secure the Handle with the Safety Lock when not in use (see p.3).
15.Warning: The dust generated by cutting certain wood, wood fiber and/or PVC products can be injurious to your health (*but since the Magnum Shear™ doesn't create any dust, we suggest that you don't eat the small chips sometimes created when cutting*).



SET-UP & ASSEMBLY

1

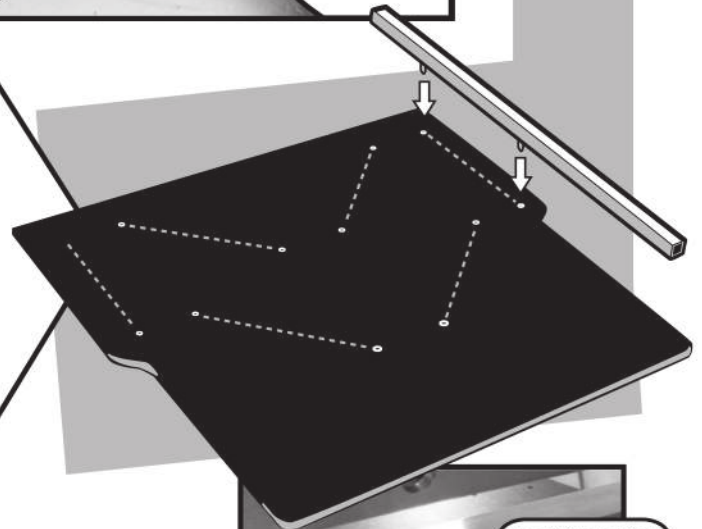
Attach each Castor to front of base with (4) **M4 x 10 Phillips Head Screws**



2

Place the Fence:

- **Insert Fence** into one of the six hole sets on the table: there are two 90° and four 45° locations
- The **Fence** is friction fit (requires effort to insert or remove)

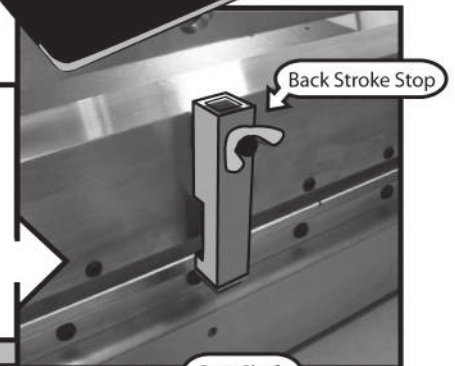


3

Attaching The Handle:

3a

Loosen Wing Nut on Back Stroke Stop and turn to down position

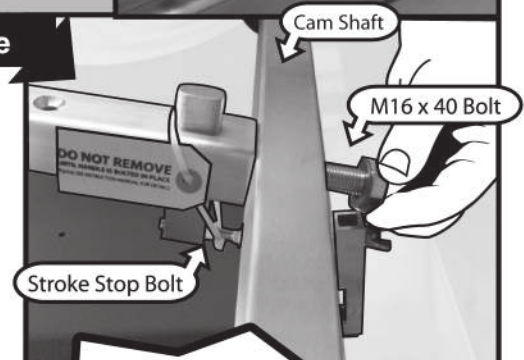


Do not remove plastic tie until handle is bolted in place

3b

Remove M16 x 40 Bolt from end of **Handle** and **insert Handle into Cam Shaft**
Note: Stroke Stop Bolt must face **Table**

Insert M16 x 40 Bolt into Cam Shaft and tighten (24mm or 15/16" wrench recommended)



3c

Re-attach Back Stroke Stop in Upward position

3d

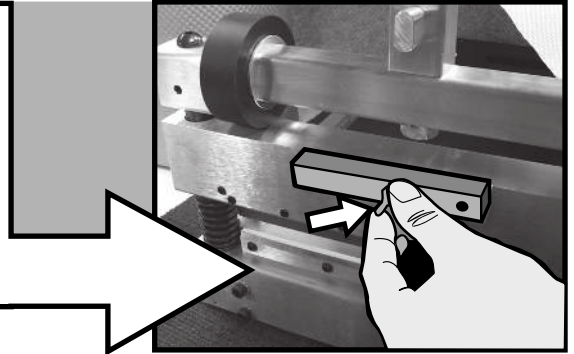
Remove plastic tie on Handle after it is bolted in place



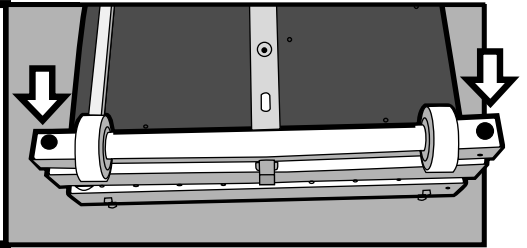
SET-UP & ASSEMBLY



4 FOR CUTTING APPROVED PRODUCTS OVER 3/4" THICK (see p.8), loosen and remove Wing Nut on Back Stroke Stop; turn Back Stroke Stop to 90° and tighten Wing Nut



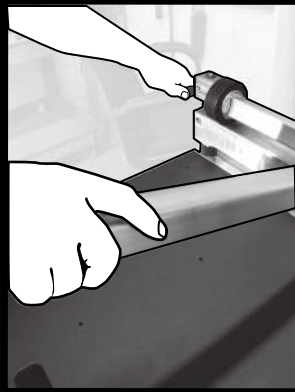
5 DO NOT LOOSEN, REMOVE OR ADJUST THE LENGTH of the M12 x 35 BH Retainer Screws - dealer repair only. Any adjustments to these bolt settings will VOID MANUFACTURER'S WARRANTY



SAFETY LOCK

1 To UNLOCK Handle

While holding the Handle down, pull Safety Lock Pin out (this allows free movement of Handle)



2 To LOCK Handle

While holding the Handle down, push Safety Lock Pin in completely. (Note: you may have to lift Handle slightly to insert Safety Lock Pin)



WARNING
HANDLE UNDER EXTREME PRESSURE - DO NOT ALLOW TO SLAM BACK!



USING YOUR MAGNUM SHEAR™

1 Making Cuts

Your **Magnum Shear™** is equipped with a two-part **Handle** that is **grasped by the operator and pushed down**.

2

It is recommended that you **hold the material down and in place until the cut is complete**.
ALWAYS KEEP HANDS AWAY FROM BLADE WHILE OPERATING OR CARRYING.

3

**MAINTAIN CONTROL OF HANDLE!
DO NOT ALLOW HANDLE TO
SLAM BACK AFTER MAKING A CUT.**

4

Some softer materials do not require the **Handle** to be extended.

WARNING
**HANDLE UNDER EXTREME
PRESSURE - DO NOT ALLOW
TO SLAM BACK!**

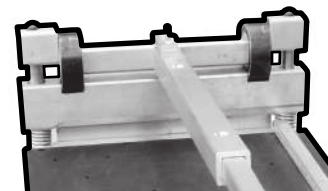


WARNING
*It is advised that
protective gloves
and goggles are worn
when operating
the Magnum Shear™*

5



You should **spray a fine layer of light oil** (10W motor oil or WD-40®) over the **Power Assembly** once every month to prevent surface corrosion.



6

It is important to secure the Handle in the down (front) position with the **Safety Lock** while carrying, storing or transporting this machine (see p.3, Safety Lock).

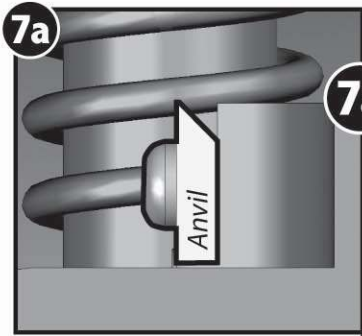
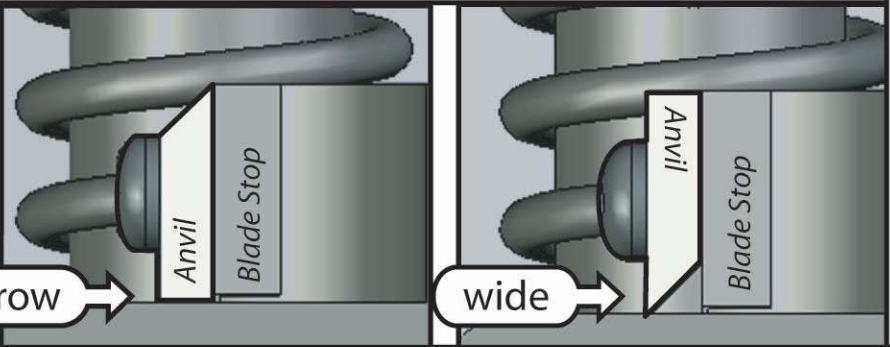
USING YOUR MAGNUM SHEAR™



7 Anvil

The Anvil has 2 edges; a 1/32" (0.75mm) narrow edge and a 3/16" (4.5mm) wide edge. Some materials need more support at this point to make a clean cut.

To change Anvil setting, remove the **M6 x 20 BH Screws** and flip the Anvil over

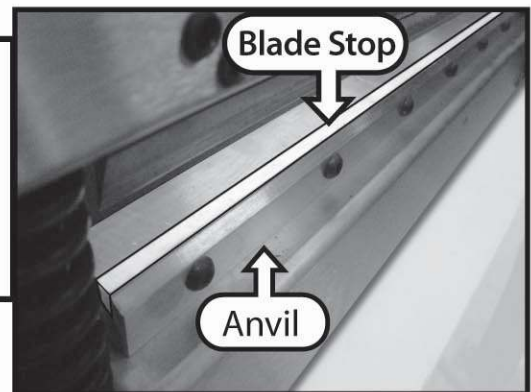


7a **THE ANVIL MAY BE USED AS A LOWER BLADE.** This can improve the cut quality on some softer products. Remove **Blade Stop** and place **Anvil** as shown (7a). Note: shorter screws (**M6 x 12 BH**) are needed to do this. See your dealer or contact **Bullet Tools**.

Note: For the L40 Magnum Shear™, the Anvil is a special order item.

8 Blade Stop

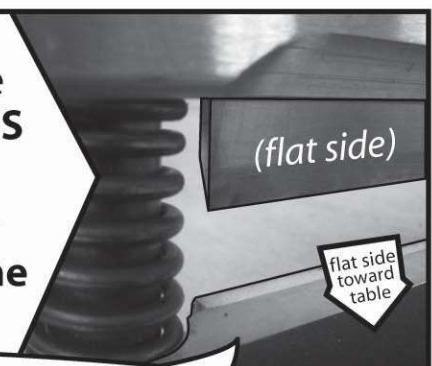
The Blade Stop may eventually become worn. Remove the Anvil and turn Blade Stop over for more use. Replacements can be purchased from your dealer.



9 The Blade

The Blade must be placed in the Head with the flat side toward the table side. **ONLY USE L-SERIES BLADES IN L-SERIES MACHINES.**

• A burr will form on the flat side of the Blade after the first few cuts; this is normal. Use the Hone Stone (included) to remove burr (see p.7, #13).



NOTICE: It is not necessary to remove the small nicks or chips from the Blade edge when sharpening or honing

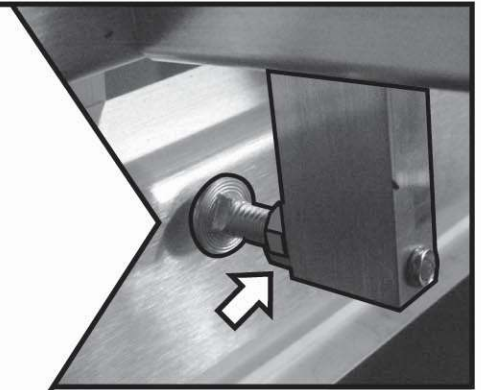


! WARNING
VERY SHARP BLADE

USING YOUR MAGNUM SHEAR™

10 Setting the Blade Depth

- A** • Loosen the Stop Screw Nut and turn Stop Screw away from Head until it is loose
- B** • Push the Handle down until the Blade is resting on the Blade Stop
- C** • Adjust Stop Screw until it makes contact with Head. Tighten Stop Screw Nut.



11 Changing the Blade

WARNING! BLADE IS EXTREMELY SHARP!
Use hand protection when removing, sharpening, or honing blade



- A** TURN THE MAGNUM SHEAR™ UPSIDE DOWN

Tip: Set the Magnum Shear™ on the edge of a sturdy bench or table

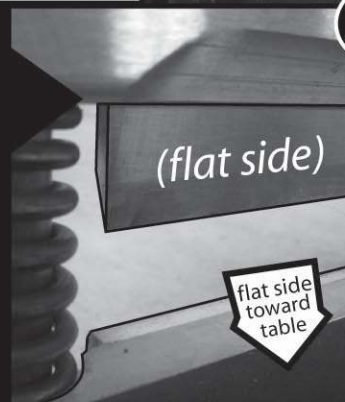
- B** • Using the 4mm Hex Wrench (included), LOOSEN BUT DO NOT REMOVE the M8 Set Screws. This will loosen the Blade.

- C** • TO REMOVE BLADE: hold Blade by each end and lift out of Blade Slot.



- D** • TO INSTALL THE BLADE: hold Blade by each end and place into the Blade Slot in the Head. Be sure it is firmly seated and there is no debris in the Blade Slot.

NOTICE: THE BLADE MUST BE PLACED IN THE HEAD WITH THE FLAT SIDE TOWARD THE TABLE



- E** • Using the 4mm Hex Wrench, tighten the M8 Set Screws, starting with the center Screw.

USING YOUR MAGNUM SHEAR™

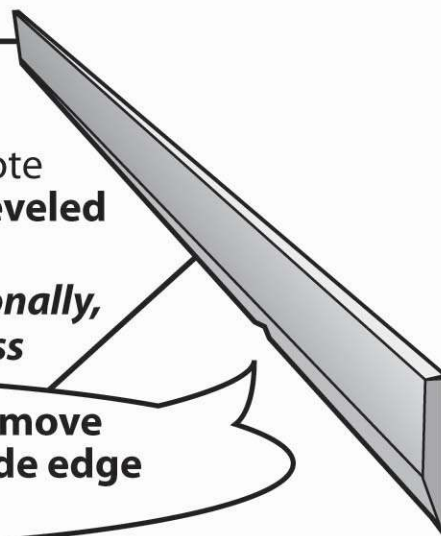


12 Sharpening the Blade

The **Blade** can be sharpened to restore a one-sided, 18-19 degree knife-edge. It is important to note that the **Blade must be sharpened only on the beveled side, leaving the flat side flat.**

• *We recommend power grinding be done professionally, as the blade must be fluid cooled during this process*

NOTICE: It is not necessary to remove the small nicks or chips from the **Blade** edge when sharpening or honing



13 Honing the Blade “Breaking the Chip”

With the **Blade** in the machine, it is quick and easy to remove the burr using the **Hone Stone** (included)

There are **three situations** when it is important to remove the burr (or “break the chip”) on the flat side of the **Blade**:

To Hone

Pull the Magnum Shear™ Handle down until the **Blade** is just above the **Blade Stop**. Lay the **wide flat side of the Hone Stone** against the flat side of the **Blade** and move the **Hone Stone** from end to end 2 to 3 times.



1. After the first 5-10 cuts on a new **Blade**.

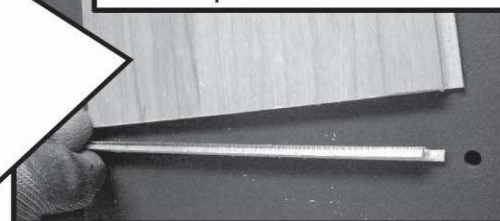
2. Every 30-50 cuts on the job.

3. When the **Blade** has been re-sharpened.

14 Double Cutting

Simply make your first cut **1/8” to 1/4” (3 to 6mm) longer** than your mark, then go back and make your second cut on your mark. This is very useful when a trim molding or transition cannot be used to cover your cut end.

Most products (listed on p. 8) shear very well with just one cut. Some brands of laminate flooring may require cutting twice to produce a better cut.





! WARNING
VERY SHARP BLADE

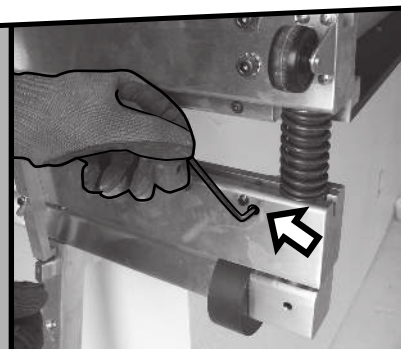
USING YOUR MAGNUM SHEAR™

15 Tilting the Blade

The L13, L20, and L26 Magnum Shears™ have a Blade Tilt Feature
Note: Tilting the **Blade** can improve the cut quality and reduce the amount of pressure needed on **some** products

To Tilt the Blade:

- A** • Turn Magnum Shear™ upside-down
- B** • Remove Blade (see “Changing the Blade,” p.6, #11)
- C** • Turn the Blade Tilt Set Screw in until it stops
- D** • Re-Install Blade (see “Changing the Blade,” p.6, #11D)



CUT LIST: ACCEPTABLE MATERIALS & SIZE LIMITATIONS

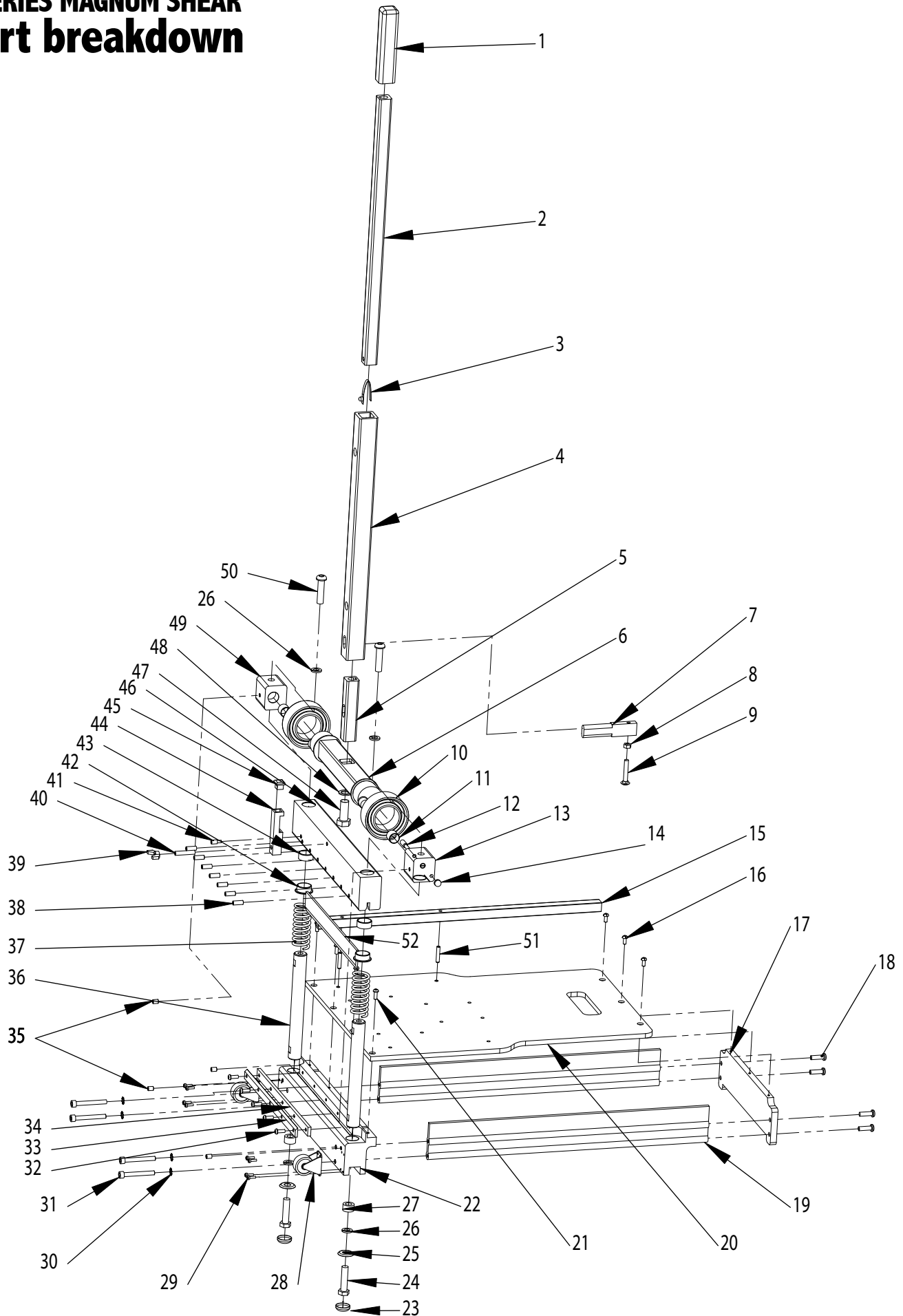
FOR THE L SERIES MAGNUM SHEAR™ WITH A STANDARD BLADE

Material	Max. Thickness	L9 Max. Width	L13 Max. Width	L20 Max. Width	L26 Max. Width
Carpet Tile	18mm or 3/4inch	9 inches	13 inches	20 inches	26 inches
Commercial Vinyl	24mm or 1 inch	9 inches	13 inches	20 inches	26 inches
Cork	24mm or 1 inch	9 inches	13 inches	20 inches	26 inches
Durastone	6mm or 1/4 inch	9 inches	13 inches	20 inches	26 inches
HardiBoard Siding	12mm or 1/2 inch	9 inches	13 inches	20 inches	26 inches
Laminate Flooring	15mm or 5/8 inch	9 inches	13 inches	16 inches	16 inches
Leather	24mm or 1 inch	9 inches	13 inches	20 inches	26 inches
Luxury Vinyl Tile	24mm or 1 inch	9 inches	13 inches	20 inches	26 inches
Parquet	12mm or 1/2 inch	9 inches	13 inches	20 inches	26 inches
Permastone	6mm or 1/4 inch	9 inches	13 inches	20 inches	26 inches
PVC Tile	24mm or 1 inch	9 inches	13 inches	20 inches	26 inches
Recycled Tire Tile	24mm or 1 inch	9 inches	13 inches	20 inches	26 inches
Rubber Cove Base	12mm or 1/2 inch	9 inches	13 inches	20 inches	26 inches
Rubber Tile	24mm or 1 inch	9 inches	13 inches	20 inches	26 inches
Soft Plastic	24mm or 1 inch	9 inches	13 inches	20 inches	26 inches
Tirex, Rope Cord	24mm or 1 inch	9 inches	13 inches	20 inches	26 inches
VCT Tile	18mm or 3/4inch	9 inches	13 inches	20 inches	26 inches
Vinyl Siding	24mm or 1 inch	9 inches	13 inches	20 inches	26 inches
Wood Siding	24mm or 1 inch	9 inches	13 inches	20 inches	26 inches
FOR THE L SERIES MAGNUM SHEAR™ WITH A SUPER BLADE™ (p.10)					
Wood Flooring, Eng. (MOST)	18mm or 3/4inch	8 inches	8 inches	8 inches	8 inches
Wood Flooring, Solid (MOST)	18mm or 3/4inch	4 inches	4 inches	4 inches	n/a

• For L40 cutting specifications, please contact your dealer, or call Bullet Tools™.

• PLEASE NOTE: ACCEPTABLE MATERIALS MAY VARY, depending on density and hardness of wood.
If extreme pressure is required to cut a product, please contact Bullet Tools™ before proceeding.

L SERIES MAGNUM SHEAR™ part breakdown



L SERIES MAGNUM SHEAR™ part list

REF. NUMBER	PART NUMBER	DESCRIPTION
1.	868	Handle Grip
2.	858U-07	Handle Upper
3.	847-07	Handle Spring Pin
4.	858L-07	Handle Lower
5.	858STUB	Handle Stub
6.	861	Cam Assembly
7.	850F-07	Front Stroke Stop
8.	891	Nut, Handle Stop - 5/16 Fin
9.	883	Bolt, Handle Stop - 5/16 x 2 Carriage
10.	865-07	Bearing, Nylon
11.	874-07	Retainer Bearing
12.	837P	Pin - Lock Down
13.	853 (Left)	Retainer (Left)
14.	837BN	Ball Knob - Pin Lock
15.	856	Fence
16.	708-07	Screw #12x1 Pan Head
17.	821	Tail, Plastic
18.	825	Button Head Screw - M8 x 30
19.	845	Rail
20.	822	Table, Plastic
21.	882	Bolt M6 x 16 x 1.0 BHSC
22.	851	Base
23.	838C	Front Foot Cap
24.	887B	Bottom Bolt - M12 x 50 x 1.75
25.	838	Front Foot Washer
26.	893	Washer Split Lock Shaft - 12mm
27.	880	Front Leg Bolt Spacer
28.	848	Roll Castor
29.	890	Castor Screw
30.	824	Star Washer - M8
31.	823	Socket Head Bolt - M8 x 65
32.	701AF-05	M6 x 20 Button Head Screw Cap
33.	854	Anvil
34.	869	Blade Stop
35.	886	Set Screw M8 x 10 Cuppoint Pin
36.	862-07	Pin
37.	859-07	Spring
38.	884	Set Screw M8 x 16 Flatpoint Blade
39.	892	Wing Nut
40.	885-07	8mm x 40 Set Screw
41.	884-07	Blade Tilt - M8 x 16 Fulldog
42.	875	Head Bearing Flanged
43.	876	Head Bearing Sleeve
44.	850B-07	Back Stroke Stop
45.	850E	Backstroke Cap
46.	852	Head
47.	887A-07	Handle Stub Hex Head Bolt - M16 x 40
48.	887WW	Wave Washer - M16
49.	853 (Right)	Retainer (Right)
50.	887A	Retainer Bolt - M12 x 35 x 1.75
51.	881	Fence Pin
52.	809B,813B,820B,826B	Blade
Not Shown	844	Hex Wrench 4mm
Not Shown	846	Ruler
Not Shown	865-07M	Bearing Sleeves (Bearing UPG Only)
Not Shown	865-07BB	Cam Bearing (Bearing UPG Only)
Not Shown	701S	Sharpening Stone
Not Shown	835-L	Instruction Manual

Available Accessories:

The Super Blade

Cuts up to 3/4" on most solid oak, maple, and engineered hardwood without dust!

Item #s **809SB, 813SB, 820SB, & 826SB**

Replacement Blades

Item #s **809B, 813B, 820B, 826B, & 840B**

All Angle Fence

Sets to any angle 0° to 90°. Item #s **701AF** (fits L9, L13, L20, & L26),

740AF (fits L40)

Hone Stone

Item #**701S**

Hard Blade Stop

Replaces the Anvil and Soft Blade Stop for cleaner cuts on soft or gummy-backed carpet & resilient tile.

Item #s **813HB, 820HB, 826HB, & 840HB**



IAP Certified: Magnum Shear™ A-0000096

Installation Assurance Program: The IAP is the only Industry program designed to provide the Customer with assurance that when a professional Installer is combined with a product that performs, a total purchase value is received.



Bullet Tools™ will repair or replace, at its expense and at its option, any Bullet Tools™ product, product part, or product accessory which in normal use has proven to be defective in workmanship or material, provided that the customer returns the product prepaid to Bullet Tools™ manufacturing facility with proof of purchase of the product within one year and provides Bullet Tools™ with reasonable opportunity to verify the alleged defect by inspection. Bullet Tools™ will not be responsible for any asserted defect which has resulted from normal wear, misuse, abuse or repair or alteration made or specifically authorized by anyone other than the authorized Bullet Tools™ manufacturer or representative. Under no circumstances will Bullet Tools™ be liable for incidental or consequential damages resulting from defective products. This warranty is Bullet Tools™ sole warranty and sets forth the customer's exclusive remedy, with respect to defective products; all other warranties, express or implied, whether of merchantability fitness for purpose, or otherwise, are expressly disclaimed by Bullet Tools™.

#835-L Instruction Manual *Revised May 2008*



BULLET TOOLS™
The Professional's Best Shot™



Made in the USA by Gunntech Mfg., Inc.

www.bullettools.com • USA (800) 406-8998 • Int'l (208) 772-0175
3390 W. Hayden Ave., Hayden, ID 83835