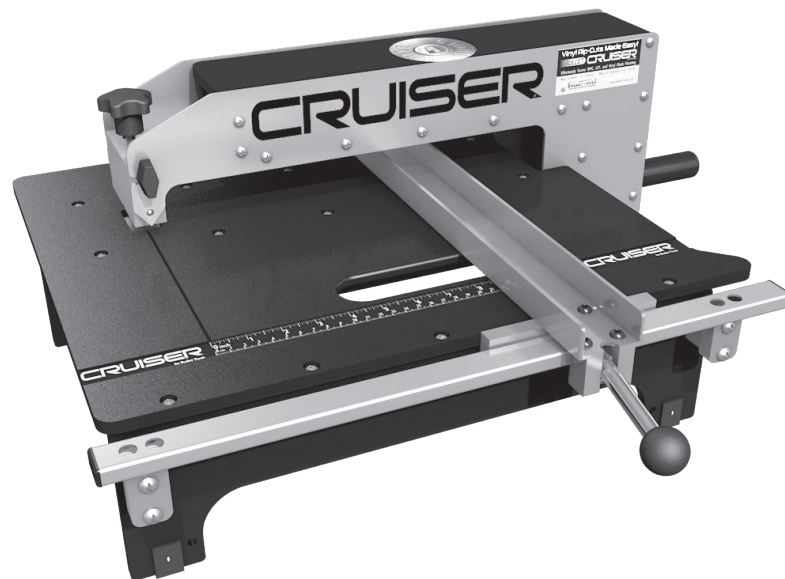


READ ME FIRST!

CRUISER™

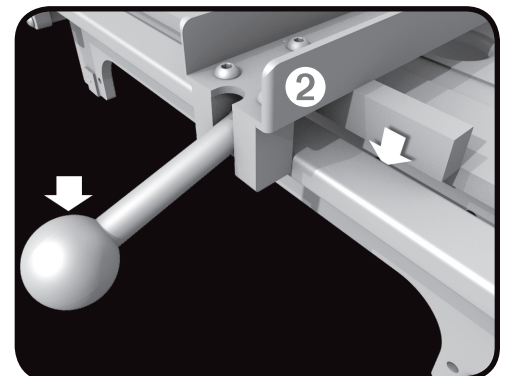
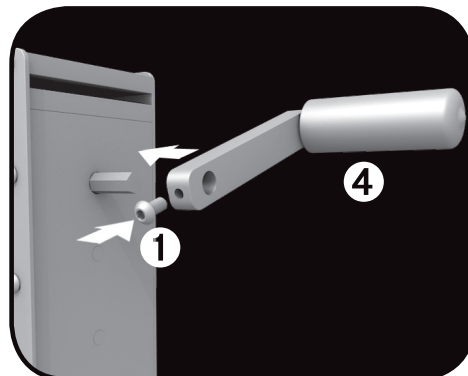
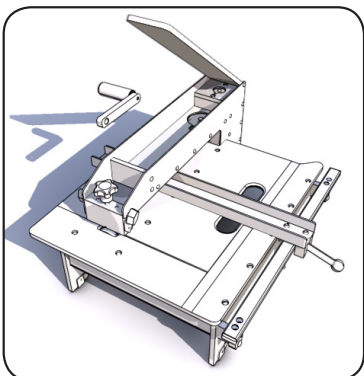
USER MANUAL



SET UP

Install drive crank **4** (packed inside top storage box) by firmly pressing onto drive shaft and tighten the screw **1**.

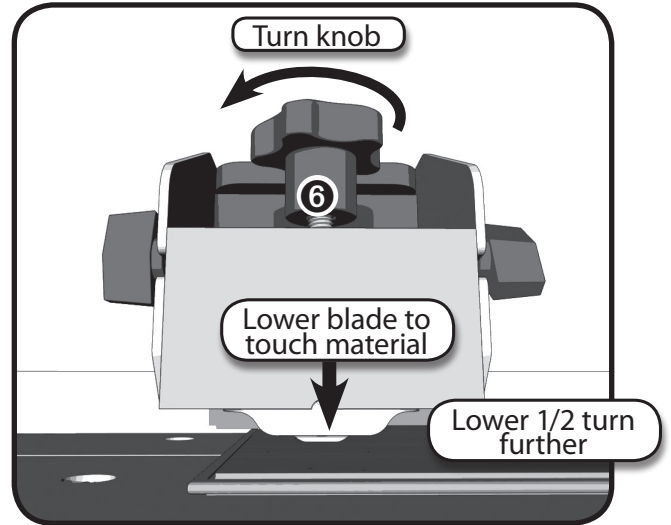
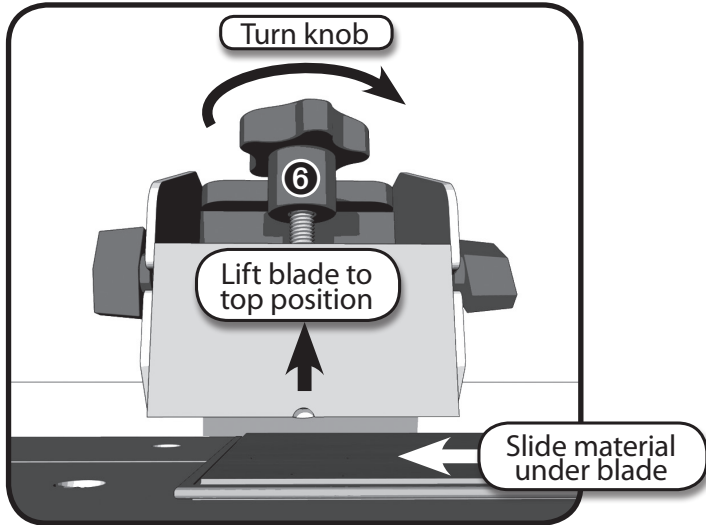
Install fence **2** by setting the "T" portion between the steel rail and the plastic table. Press down on lock lever to latch in position.



SETTING BLADE DEPTH

- Turn knob ⑥ and lift the blade to the top position.
- Slide a scrap piece of material under the blade.
- Turn knob ⑥ to lower blade until it touches the material.
- Lower the blade 1/2 turn further. Your blade is now set.

WARNING: Scoring too deep will break your blade!



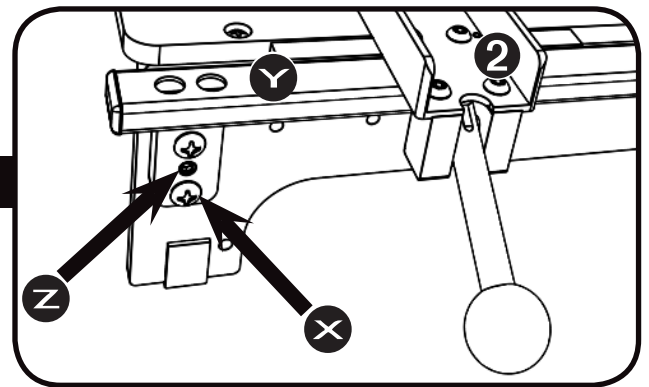
NOTE: Foam and cork backed material must be cut UPSIDE-DOWN

SETTING FENCE POSITION:

- Lift lock lever to unlatch.
- Slide fence ② to desired position.
- Press lock lever down firmly to latch in place.

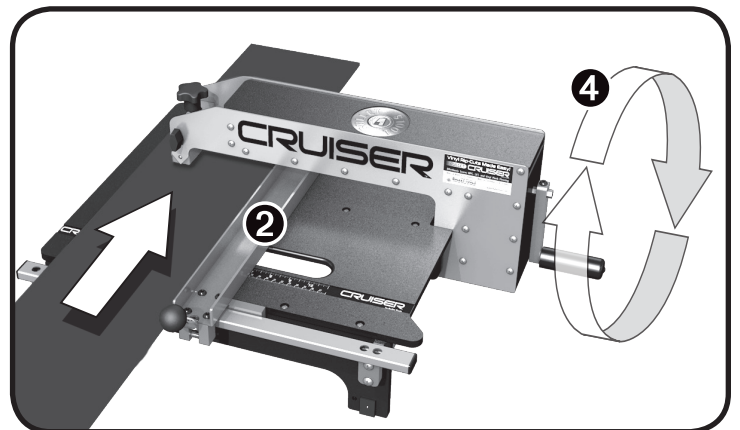
SQUARING THE FENCE

- Loosen Phillips screws ⊗ on ONE SIDE of fence track ♡.
- Tighten Adjustment Set screw Ⓩ 1/2 turn.
- Tighten Phillips screws ⊗.
- Repeat as needed until fence track ♡ is square with receiver.



IN USE- STRAIGHT CUTS:

- Set blade depth (see above).
- Pull up on lock lever and slide fence to the desired width.
- Push lock lever down to latch the fence in position.
- Slide LVP or WPC plank against the fence ②, then push it forward under the blade.
- Gently hold material against the blade and turn the drive crank ④.
- Continue turning the drive crank until material has been scored completely.
- Bend the material to snap it along the score line.



CRUISER

Continued...

IN USE- CURVED CUTS:

Set the blade depth.

Pull up on the fence lock lever and remove the fence.

Draw a line on your material representing the path you plan to cut.

THE SMALLEST RADIUS WHICH MAY BE CUT WITH THE BULLET CRUISER IS 3" (75mm).

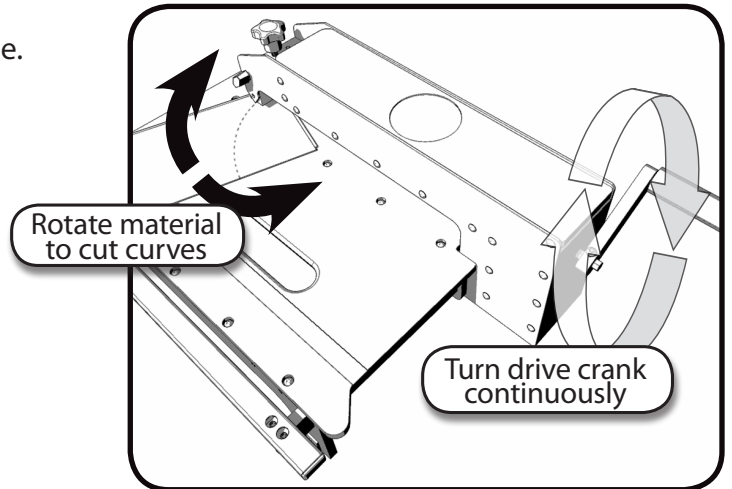
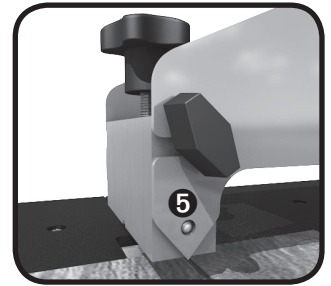
Align your line with the arrow indicator ⑤ on the Cruiser and push firmly under blade.

Turn the drive crank and allow the material to be pulled under the blade.

Rotate the material as necessary while turning the drive crank to ensure that the score wheel follows your line.

Continue turning drive crank until material has been scored completely.

Bend the material to snap it along the score line.



CAUTION

Rotating material when the drive wheel is not turning, or attempting to follow a diameter smaller than 6" (75mm) will crack the blades!



CHANGING THE UPPER BLADE:

Turn the blade adjustment knob ② counterclockwise until the blade is fully retracted.

Pull sideways on the blade receiver assembly ① until it snaps out of position, then press down to remove it from the Cruiser frame.

Extend the blade cartridge fully by turning the blade adjustment knob ② clockwise until it stops. Do not force the knob further.

Use a pen or small screwdriver to push the axle pin ③ out of the blade cartridge.

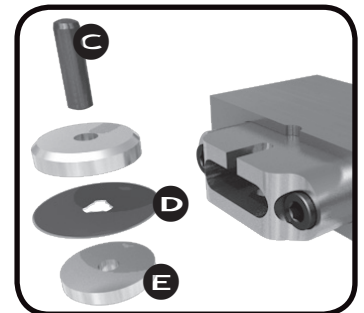
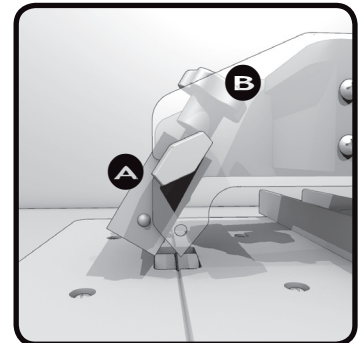
Slide the blade ④ and spacers ⑤ out of the blade cartridge.

Discard the old blade and place a new one onto the axle pin, ③ sandwiched between the two spacers.

Apply a film of grease to the small steps on the sides of the spacers ⑤ and to the axle pin ③.

Slide the blade and spacers back into the blade cartridge and center the axle pin.

Reinstall cartridge, snap blade receiver assembly ① back into position.



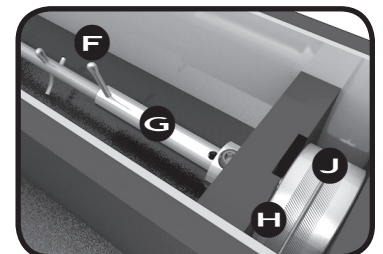
CHANGING THE LOWER BLADE:

Turn your Cruiser upside-down. Remove the hairpin cotter ⑥ from the driveshaft coupler ⑦.

Slide the driveshaft coupler ⑦ to remove the connected axle from the drive wheels ⑧ and blade ⑨.

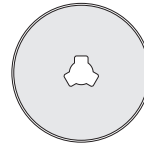
Remove the drive wheels ⑧ and blade ⑨, and pull apart to remove the old blade.

Insert new blade and follow the first three steps in reverse to reinstall.

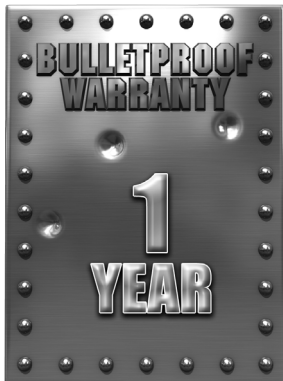
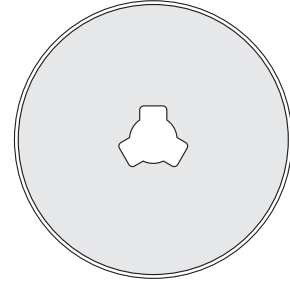


Cruiser Replacement Blades

Upper Blade = 2095B



Lower Blade = 2012B



Bullet Tools™ warrants that this product will be free from defects in material and workmanship under normal use and service for one (1) year from initial purchase. This warranty is limited to the original purchaser of this product only, when purchased in North America from an authorized distributor. This warranty includes all parts except the blade and cosmetic appearance (chips, dings, scratches) caused by normal use and wear. This warranty does not cover any damage due to accident, misuse, abuse or negligence.

Further, it is valid only if the product is used with the cut products specified in the cut guide. Please refer to the User Guide for details or call Bullet Tools™ technical support. In order to recover under this limited warranty, the purchaser must make claim to Bullet Tools™ within 60 days of occurrence and must present acceptable proof of original ownership (such as original receipt, warranty card registration, on-line registration, or other documentation Bullet Tools™ deems acceptable) for the product. Bullet Tools™, at its option, shall repair or replace the defective unit covered by this warranty.