

***PAIN*T & *WALL*COVERING**



**HOME OF THE ICONIC
AMERICAN-MADE TOOL BRANDS**

800-888-0127 | CustomerSuccess@MARSHALLTOWN.com | MARSHALLTOWN.com

M Heavy-Duty Paint Tray & Liners

- Engineered for both professionals and DIYers to maximize efficiency while painting
- Solvent-resistant, non-stick material works with all paints and stains
- Angled magnet creates an optimal resting position for paint brush
- Pour spout on each side of deep well allows for easy transfer of paint
- Three roller handle divots create a variety of roller handle resting positions
- Ergonomic handles to allow for easy, spill-free transportation
- For use with 9" (229 mm) roller
- Deep well holds 1 gallon (3.79 L) of paint
- Liners sold separately
- Sold 1 per inner pack/8 per outer pack, 12 per outer pack where noted with*



Easy Pour Spout

Brush Magnet

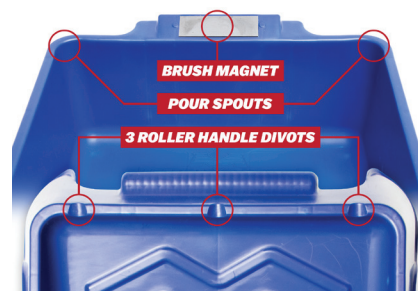


U.S. Patent No. US D1,007,088

NON-STICK
MATERIAL
FOR
**EASY
CLEANUP**



DEEP-WELL DESIGN
**HOLDS UP TO
1 GALLON**



EDI	Part#	Description
29267	HDT	Heavy-Duty Paint Tray
29269	HDTL3*	Heavy-Duty Paint Tray Liners - 3 Pack

M Roller Paint Pail & Liners **NEW**

- Pronounced pour spout on corners to transfer paint and two wiping blades
- Adjustable nylon cinch strap
- Brush magnet holds paint brushes up to 3" (76 mm)
- Two magnetic roller rests hold most metal framed paint rollers up to 4½" (114 mm) out of the paint
- Roll off ramp suitable for rollers up to 4½" (114 mm)
- Solvent resistant, non-stick material to work with any paint or stain
- 1 quart capacity
- Liners sold separately
- Sold 6 per inner pack/6 per outer pack, 1 per inner pack/12 per outer pack where noted with *



Brush Magnet



Magnetic Roller Rest

EDI	Part#	Description
32610	4RP	Roller Paint Pail
32611	4RPL3*	Roller Paint Pail Liners - 3 Pack



Heavy-Duty Paint Pail & Liners

- Engineered for both professionals and DIYers to maximize efficiency while painting
- Solvent-resistant, non-stick material works with all paints and stains
- Magnet creates an optimal resting position for most paint brushes up to 2" (51 mm) wide
- Pronounced pour spout allows for easy transfer of paint
- Convenient thumb rest provides a secure, comfortable grip
- Adjustable nylon cinch strap comfortably fits any hand size
- Two wiping blades to rid excess paint from loaded paint brush
- 1 quart (946 mL) capacity
- Liners sold separately
- Countertop Display (HDP-CD) includes:
 - (6) Heavy-Duty Paint Pails (HDP)
 - (12) Heavy-Duty Paint Pail Liner Packs (HDPL6)
- Clip Strip (HDP-CS) includes:
 - (8) Heavy-Duty Paint Pails (HDP)
- Sold 1 per inner pack/8 per outer pack, 12 per outer pack where noted with *



Brush Magnet



Wiping Blade



U.S. Patent No. US D984074S1

CONVENIENT
THUMB REST
FOR COMFORTABLE GRIP



INTEGRATED
POUR SPOUT
FOR EASY PAINT TRANSFER



HDP-CD



HDP-CS

EDI	Part#	Description	Size-in	Size-mm
29263	HDP	Heavy-Duty Paint Pail	N/A	N/A
29265	HDPL6*	Heavy-Duty Paint Pail Liners - 6 Pack	N/A	N/A
32394	HDP-CD	Heavy-Duty Pails & Liners Countertop Display	18 X 13 $\frac{3}{8}$ X 8	457 X 346 X 203
32396	HDP-CS	Heavy-Duty Paint Pail Clip Strip	N/A	N/A

Paint Cup

- Magnet creates an optimal resting position for most paint brushes up to 2" (51 mm) wide
- Pronounced pour spout allows for easy transfer of paint
- Perfect for small paint projects
- 1 pint (473 mL) capacity
- Paint Cup Countertop Display (PC271-CD) includes:
 - (24) Paint Cups (PC271)
- Note: Not compatible with HDPL6 liners
- Sold 1 per inner pack/24 per outer pack



Brush Magnet



Easy Clean Up



PC271-CD



U.S. Patent No. US D77772S1

EDI	Part#	Description	Size-in	Size-mm
29271	PC271	Paint Cup	N/A	N/A
32395	PC271-CD	Paint Cup Countertop Display	18¾ X 13½ X 8	476 X 346 X 203

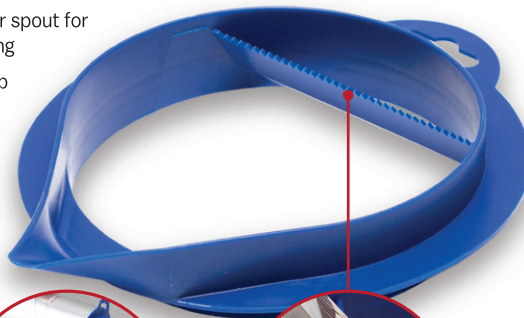
Paint Display

- HDPTCL-QP Includes:
 - (8) Heavy-Duty Paint Pails (HDP)
 - (12) Heavy-Duty Paint Pail Liners - 6 Pack (HDPL6)
 - (5) Heavy-Duty Paint Trays (HDT)
 - (12) Heavy-Duty Paint Tray Liners - 3 Pack (HDTL3)
 - 24 Paint Cups (PC271)
- Conveniently display MARSHALLTOWN paint products on your showroom floor
- Sold 1 per inner pack/1 per outer pack



1 Gallon Pour Spout

- Pronounced pour spout for mess-free pouring
- Paint brush comb wiping blade
- Fits and easily attaches to mouth of most 1 gallon (3.79L) paint cans
- Sold 1 per inner pack/12 per outer pack



Brush Comb

EDI	Part#	Description
32393	HDPTCL-QP	Heavy-Duty Pail, Tray, Cup & Liners Quarter Pallet Display

EDI	Part#	Description
29257	GPS1	1 Gallon Pour Spout

5 Gallon Pour Spout with Storage Cap NEW

- Fits plastic and metal 5 gallon bucket lids for easy, mess-free pouring
- Made from durable, easy to clean plastic
- Includes three attachments that can be pulled apart to fit tint plug or threaded bung types
- Cap allows for airtight seal during storage
- Sold 1 per inner pack/12 per outer pack

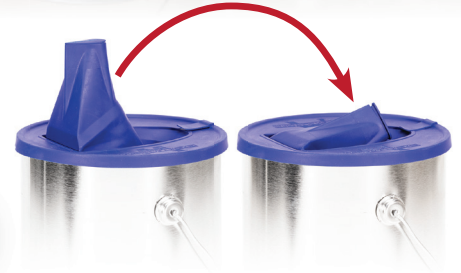


EDI	Part#	Description
29255	GPS5	5 Gallon Pour Spout w/Storage Cap



M 1 Gallon Pour Lid **NEW**

- Fits most 1 gallon paint cans
- Keeps paint can sealed to extend paint life
- Foldable pour lid allows stackable storage
- Pull tab for easy removal from paint can
- Solvent resistance for working with water-based paint or stain
- Easy-open vent hole to ensure a smooth, controlled flow when pouring
- Sold 1 per inner pack/10 per outer pack



Foldable Lid



Attach



Vent



Pour



Seal & Store

EDI	Part#	Description
32612	GPL1	1 Gallon Pour Lid

M 1 Gallon Above Rim Paint Grid **NEW**

- Allows the user to utilize the roller ramp and brush comb when the can is full of paint
- Cutout divot at top of ramp provides a place to rest paint roller
- Ramp can accommodate rollers up to a 4" (102 mm)
- Walls of ramp help contain excess paint
- Snaps onto most paint can rims
- Sold 1 per inner pack/8 per outer pack



U.S. Patent No. US 1,014,888

Brush Comb



EDI	Part#	Description
32613	GARG1	1 Gallon Above Rim Paint Grid

Plastic Painter's Multi-Tool

- Trim guide gets into hard-to-reach areas and allows for a crisp cut line
- Scraper/spreader removes old texture and applies spackle or adhesive
- Paint brush comb removes excess paint or heavy build up from bristles
- Roller cleaner removes excess paint from roller cover, saving paint and time during cleaning
- Paint can squeegee saves extra paint clinging to the inside wall of a paint can
- Won't rust or corrode
- Disposable, or can be easily cleaned and reused
- Sold 45 per inner pack/135 per outer pack



EDI	Part#	Description
29292	PMT	Plastic Painter's Multi-Tool

Paint Can Opener **NEW**

- Utilizes bottle and can opener in one
- Rust- and solvent-resistant
- Made of durable steel
- Sold 1 per inner pack/100 per outer pack



EDI	Part#	Description	Size-in	Size-mm
29234	CO234	Paint Can Opener	N/A	N/A



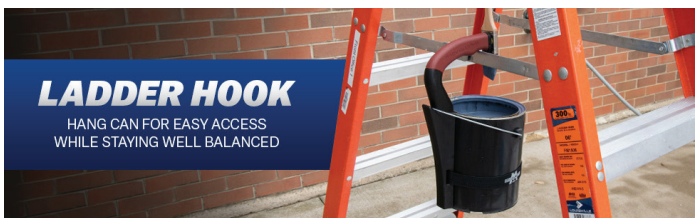
Plastic Painter's Stir Stick **NEW**

- Easy to clean for reuse
- Holes allow for better agitation
- Graduated measurement markings
- Hang hook to store on rim of paint can
- Paint can scraper to remove any excess paint from the sides of the can
- Sold 1 per inner pack/24 per outer pack



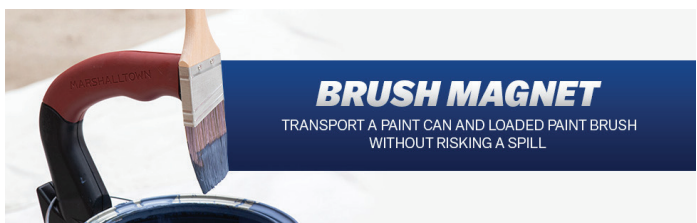
1 Gallon Can Carrier

- Ergonomic handle designed to minimize fatigue of carrying a paint can by the wire handle
- Magnet to hold brush over mouth of paint can
- Ladder hook allows for convenient placement
- Fits standard 1 gallon (3.79 L) can
- Sold 1 per inner pack/8 per outer pack



LADDER HOOK

HANG CAN FOR EASY ACCESS
WHILE STAYING WELL BALANCED



BRUSH MAGNET

TRANSPORT A PAINT CAN AND LOADED PAINT BRUSH
WITHOUT RISKING A SPILL

EDI	Part#	Description
29294	PSS294	Plastic Painter's Stir Stick

EDI	Part#	Description
29247	GCC247	1 Gallon Can Carrier

M 4-in-1 Painter's Clip

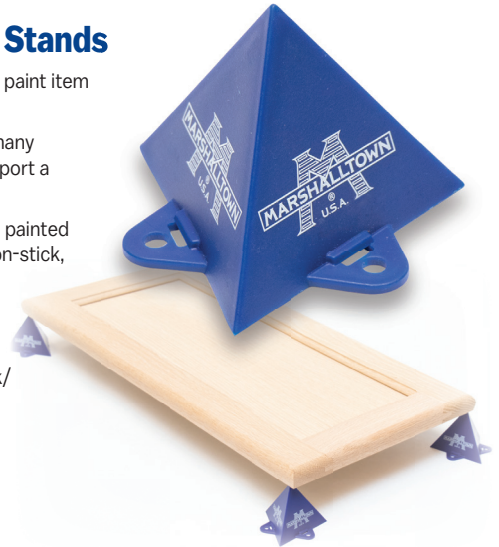
- Versatile multi-use tool and paint brush holder
- Paint can opener
- Paint can rim cleaner
- Two magnets to rest paint brush
- Strong clip for easy attachment to paint can or bucket
- Sold 1 per inner pack/
24 per outer pack



EDI	Part#	Description
29261	CC41	4-in-1 Painter's Clip

M Painter's Stands

- Designed to support paint item above work surface
- Stands interlock in many combinations to support a variety of items
- 1 point of contact on painted surface allows for non-stick, quick-flip of item to complete job faster
- 10 stands included
- Sold 1 per inner pack/
10 per outer pack



EDI	Part#	Description
29253	PP10	Painter's Stands

M Roller Cleaner

- Quickly and easily cleans paint out of roller cover, saving time and money
- For use with 9" (229 mm) roller
- Scraper to remove excess paint from roller cover
- Roller cage locking mechanism
- Threaded to fit a standard garden hose
- Sold 1 per inner pack/
8 per outer pack



Scrape Roller



Insert & Hook to Secure



Connect Hose



Run Water Until Clean

EDI	Part#	Description
29249	RC1	Roller Cleaner

M Roller Squeegee

- Saves time and paint by squeezing excess paint out of roller cover back into storage can
- Compatible with all roller nap sizes
- Made of durable zinc-plated steel
- Easy to clean and reuse
- Sold 1 per inner pack/
24 per outer pack



EDI	Part#	Description
29251	RCS51	Roller Squeegee

M 2-in-1 Brush and Roller Cleaner **NEW**

- Saves time and extends paint applicator life
- Spinning action for quicker drying time
- Reusable
- Compatible with standard paint brushes and rollers
- Sold 1 per inner pack/
12 per outer pack



EDI	Part#	Description
32831	21BRC	2-in-1 Brush & Roller Cleaner

M Paint Brush Savers **NEW**

- For use with a 6½" (165 mm) or smaller paint brush
- Easy drawstring closure to seal brushes
- Keeps brushes wet for up to 7 days
- Constructed of EVA plastic that is transparent to see color of paint used
- Pack of 5
- Sold 1 per inner pack/ 24 per outer pack



M Paint Roller Savers **NEW**

- For use with a 9" (229 mm) or smaller paint roller
- Easy drawstring closure to seal rollers
- Keeps rollers wet for up to 7 days
- Constructed of EVA plastic that is transparent to see color of paint used
- Pack of 5
- Sold 1 per inner pack/ 24 per outer pack

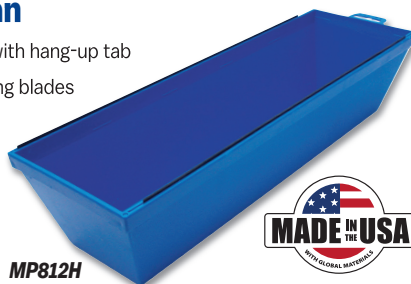


EDI	Part#	Description
29336	PBS5	Paint Brush Savers - 5 Pack

EDI	Part#	Description
29337	PRS5	Paint Roller Savers - 5 Pack

M Plastic Mud Pan

- Made of long wearing plastic with hang-up tab
- Equipped with two metal wiping blades
- Resists chemicals and temperature changes
- Outside is slightly textured to provide a non-slip surface
- Sold 1 per inner pack/ 10 per outer pack



MP812H

EDI	Part#	Size-in	Size-mm
28601	MP812H	12	305
28602	MP814H	14	357

W Stainless Steel Metal Mud Pans **NEW**

- Designed to hold material while you work
- Material won't get stuck in corners
- Made of stainless steel
- Sold 6 per inner pack/ 6 per outer pack



023-002

EDI	Part#	Description	Size-in	Size-mm
40098	023-002	Stainless Steel Mud Pan	12	305
40099	023-003	Stainless Steel Mud Pan	14	356

W Plastic Mud Pans **NEW**

- Designed to hold material while you work
- Durable and easy to use
- Resists chemicals and temperature changes
- Tapered ends and sides for easy mud removal
- Choice of 1 or 2 wiper blades



914

EDI	Part#	# of Wiper Blades	Size-in	Size-mm	Inner/Outer
40655	MP812W	2	12	305	1/20
40657	MP814W	2	14	356	1/10
16114	914	1	12½	313	1/12

W Galvanized Steel Metal Mud Pans **NEW**

- Designed to hold material while you work
- Material won't get stuck in corners
- Made of galvanized steel
- Sold 6 per inner pack/ 6 per outer pack



MP656

EDI	Part#	Description	Size	Size-mm
40109	025-003	Galvanized Steel Mud Pan	14	356
14656	MP656	Galvanized Steel Mud Pan	12½	327

W Heli-Arc Mud Pans

- Made from heavy gauge stainless steel
- For details and size options see page 330



M W Taping Knives

- For details and size options see page 321 - 322



M W Blue Steel Taping Knives

- For details and size options see page 323



M DuraSoft® Handle Putty & Joint Knives

- For details and size options see page 325 - 326



M Plastic Taping Knives

- Reinforced handles and tapered flexible blades
- Intended to be disposed of after use
- Sold 24 per inner pack/ 24 per outer pack



EDI	Part#	Size-in	Size-mm
16271	6271	6 X 3½	152 X 89
16272	6272	8 X 3¾	203 X 95
16273	6273	10 X 3⅞	254 X 79

M Plastic Putty & Joint Knives

- Tapered flexible blade with a comfortable grip that resists bending and breaking
- Comfortable contoured handle
- Made of high-impact polystyrene
- **PKS** includes 2", 4" & 6" putty knives
- **TKS** includes 6", 8" & 10" joint knives
- Inner/outer pack quantities are shown in table



EDI	Part#	Description	Size-in	Size-mm	Inner/Outer
16267	6267	Putty Knife	1½	38	36/576
16268	6268	Putty Knife	2	51	36/432
16269	6269	Putty Knife	3	76	36/288
16270	6270	Putty Knife	4	102	36/216
28234	PKS	Set of 3 Putty Knives	2, 4, 6	50, 102, 152	1/20
28230	TKS	Set of 3 Joint Knives	6, 8, 10	152, 203, 254	1/20

W Plastic Putty & Taping Knives

- For details and size options see page 324



W Stainless Steel Handle Tools NEW

- Made from stainless steel for corrosion and wear resistance
- One-piece construction for long performance life
- Large hang hole for easy storage
- Ergonomic handle shape and optimal weight balance
- Convenient hammer-end
- Sold 6 per inner pack/ 6 per outer pack



EDI	Part#	Description	Size-in	Size-mm
40034	015-018	12-in-1 Tool	N/A	N/A
40093	022-094	Joint Knife	4	102
40094	022-095	Joint Knife	5	127
40095	022-096	Joint Knife	6	152
40096	022-099	Joint Knife	10	254

All Stainless Steel Putty & Joint Knives

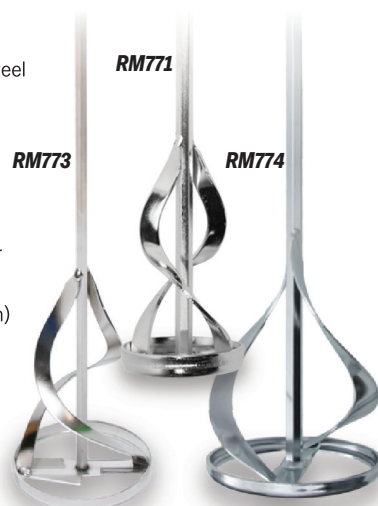
- Made from stainless steel for corrosion and wear resistance
- Smooth surface for easy removal from your pocket
- Large hang hole for easy storage
- Ergonomic handle shape and optimum weight balance
- Convenient hammer end
- Sold 6 per inner pack/ 6 per outer pack



EDI	Part#	Description	Size-in	Size-mm
29024	SSPK2	Stainless Steel Putty Knife	2	51
29026	SSJK4	Stainless Steel Joint Knife	4	102
29028	SSJK6	Stainless Steel Joint Knife	6	152

Ribbon Mixers

- Made from high quality plated steel
- Evenly mixes paint, drywall mud and EIFS adhesives and coatings
- Works best at 500-900 rpm
- The 2" (51 mm) and 3" (76 mm) mixers fit a 3/8" (10 mm) or larger variable speed drill
- The 4" (102 mm) and 5" (127 mm) mixers fit a 1/2" (13 mm) variable speed drill
- Inner/outer pack quantities are shown in table



EDI	Part#	Size-in	Size-mm	Inner/Outer
14571	RM771	2 X 16	51 X 406	6/6
28247	RM770	3 X 16	76 X 406	8/8
14572	RM772	4 X 24	102 X 610	6/6
28249	RM774	5 X 24	127 X 610	8/8
14573	RM773	5 X 30	127 X 762	4/24

Cyclone Paint Mixer

- Adjusts to mix liquids in gallon or quart cans
- Ideal for paints, adhesives, stains, and most viscous fluids
- With a 2.65" dia., the mixer is 2" (51 mm) tall when both wheels are assembled
- Steel shaft fits 3/8" (10 mm) or larger drill
- Bottom half of wheel should be removed to mix one quart containers
- Sold 6 per inner pack/ 72 per outer pack



Remove bottom half to mix one quart containers

EDI	Part#	Size-in	Size-mm
10798	PM798	11	279

Mixers

- Used to mix paint, adhesive, mortar, joint compound and much more
- For details and size options see page 336 - 338



RockWarrior™ 2.0 **NEW**

- Tempered, high carbon steel blade with beveled point
- Improved ergonomic soft grip handle
- Cuts in both directions-push and pull
- Intended for drywall, but also cuts most non-metallic material
- Sold 1 per inner pack/ 8 per outer pack



EDI	Part#	Description
40673	RW2.0W	RockWarrior™ 2.0

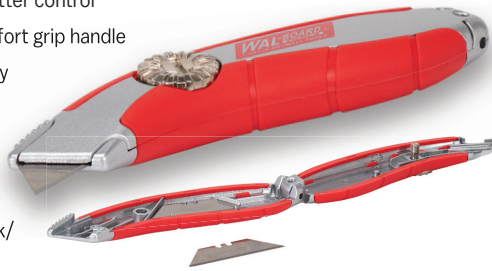
Utility Saws

- Several styles of knives to choose from
- For details see page 347



W Comfort Fixed Blade Utility Knife **NEW**

- Curved shape for better control
- Rubber-coated comfort grip handle
- Heavy-duty zinc body
- Stores up to five blades
- Easy open thumb dial blade change
- Sold 6 per inner pack/ 6 per outer pack



EDI	Part#	Size-in	Size-mm
40032	015-009	8¾	218

M Folding Utility Knife

- Quick-change blade mechanism
- Safety lock-back system
- Aluminum handle, zinc housing, and stainless steel skeleton
- Includes belt clip
- Five blades included
- Sold 8 per inner pack/ 8 per outer pack



EDI	Part#	Size-in	Size-mm
28240	9080	6¾	159

M DuraSoft® Auto-Load Utility Knife

- Auto-Load blade replacement
- Push button blade release
- Easy to load blade storage door
- DuraSoft® handle for increased comfort and reduced fatigue
- Five blades included
- Sold 8 per inner pack/ 8 per outer pack



EDI	Part#	Size-in	Size-mm
28241	9040	6½	165

W Replacement Blades **NEW**

- Professional quality replacement knife blades
- Heavy-duty, contractor grade blades
- Sold 1 per inner pack/1 per outer pack, sold 24 per inner pack/24 per outer pack where noted with *



015-005

EDI	Part#	Description
40029	015-004*	Replacement Blades - 5 Pack
40030	015-005	Replacement Blades - 100 Pack

M Utility Blades

- Carbon steel construction
- Fits most standard utility knives
- Engineered for general-purpose cutting
- Storage case included

REPLBLD5



REPLBLD50



EDI	Part#	Description	Inner/Outer
16384	804	100 Std. Blades	1/1
29030	REPLBLD5	5pk Utility Blades	1/24
29032	REPLBLD50	50pk Utility Blades	1/12

M Break-Off Blade Knives

- 9 mm knife utilizes 13 point break-off blade, 18 mm knife utilizes 8 point break-off blade
- Soft grip handle
- Strong metal sheath blade housing
- Blade automatically locks when in position
- End Cap used to snap blades
- Packed with extra blade inside
- Sold 1 per inner pack/ 12 per outer pack



9052SG

9051SG

E181

EDI	Part#	Description
29188	9051SG	9 mm Break-Off Blade Knife
29190	9052SG	18 mm Break-Off Blade Knife
29192	E181	9 mm Break-Off Replacement Blades - 5 Pack
29194	E183	18 mm Break-Off Replacement Blades - 5 Pack

M W Knives

- Several styles of Knives to choose from
- For details see pages 438 - 440



M Scoring Knives

- For details see page 43



DuraSoft® Hand Sander

- Lightweight aluminum backing plate bonded to foam pad
- Resilient DuraSoft® handle provides a soft feel and reduces fatigue
- Designed for die-cut or a half sheet of standard sandpaper or sandscreen
- Sold 6 per inner pack/ 6 per outer pack



Plastic Hand Sander **NEW**

- Features reliable & secure sandpaper clamping mechanisms
- Reduces time spent changing sandpaper
- No extra hardware to lose
- Sold 1 per inner pack/8 per outer pack



U.S. Patent No. D837,022

EDI	Part#	Size-in	Size-mm
16320	20D	9 ³ / ₈ X 3 ¹ / ₄	239 X 83

EDI	Part#	Size-in	Size-mm
40502	200PW	9 ¹ / ₄ X 3 ³ / ₄	235 X 83

Soft Grip Hand Sander **NEW**

- Lightweight aluminum backing plate bonded to foam pad
- Soft grip handle provides a soft feel and reduces fatigue
- Designed for die-cut or a half sheet of standard sandpaper or sandscreen
- Sold 1 per inner pack/ 6 per outer pack



Plastic Hand Sander **NEW**

- Durable all-plastic construction
- Smooth, contoured handle or the perfect grip
- Clamp design for holding several sheets of sandpaper at once
- Sold 6 per inner pack/6 per outer pack

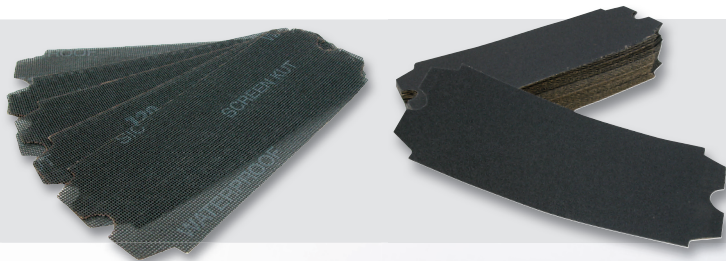


EDI	Part#	Size-in	Size-mm
40538	20DW	9 ¹ / ₄ X 3 ¹ / ₂	241 X 89

EDI	Part#	Size-in	Size-mm
40302	088-006	9 ¹ / ₄ X 3 ³ / ₄	235 X 83

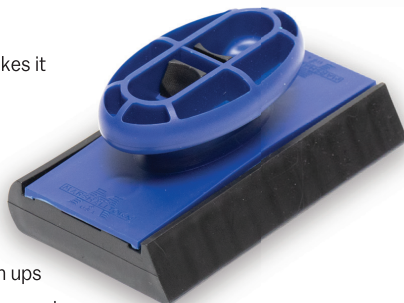
Sandscreens & Sandpaper

- For details see page 362



Sanding Block

- Quick-change clasp feature makes it easy to load with 1/4 sheet of standard sandpaper
- Ergonomic handle allows for comfort and control
- Shaped to sand curves, corners or flat surfaces
- Ideal for small projects or touch ups
- Sold 1 per inner pack/8 per outer pack



EDI	Part#	Description
29186	ESB	Sanding Block



W Drywall Sanding Sponge **NEW**

- Abrasive side for wet sanding; sponge side for removing residue
- Recommended by compound manufacturers
- Virtually dustless drywall sanding
- Cleans easily, reusable
- Individual sponge dimensions are: 9L X 4½W X 1¼"H (229L X 115W X 44H mm)
- **DWS467** display contains 144 sponges per inner/144 outer pack; **DWS467-3** contains 48 sponges per inner/48 outer pack



DWS467-3

EDI	Part#	Description	Size-in	Size-mm
16467	DWS467	Display of 144	18½ X 18½ X 48	470 X 470 X 1219
16468	DWS467-3	Display of 48	12½ X 22½ X 13½	318 X 572 X 343

W Drywall Sanding Sponges **NEW**

- Achieve professional feather finish
- Designed for sanding wallboard joint compound
- Dustless sanding when used wet
- Cleans easily, reusable
- Sold 12 per inner pack/12 per outer pack



038-030

038-035

EDI	Part#	Description	Size-in	Size-mm
40158	038-030	Drywall Sanding Sponge	8¾ X 4½ X 1½	225 X 114 X 41
40159	038-032	Angled Drywall Sanding Sponge	8¾ X 3¾ X 1½	225 X 98 X 41
40160	038-035	Premium Drywall Sanding Sponge	8¾ X 4½ X 1½	225 X 114 X 41

M Sanding Sponges

- Several grits available
- Use wet or dry
- Can be used on wood, drywall and metal surfaces
- Can be rinsed and reused
- Angled sponges are great for sanding one side of a corner without scratching the other side
- Sold 24 per inner pack/24 per outer pack, extra large sponges sold 20 per inner pack/20 per outer pack



SB486M

SB488MC

SB491MF



EDI	Part#	Description	Size-in	Size-mm
10486	SB486F	Sngl. Angle Fine	4¾ X 2¾ X 1	124 X 73 X 25
10487	SB486M	Sngl. Angle Med.	4¾ X 2¾ X 1	124 X 73 X 25
10488	SB488MF	Dual Angle Med./Fine	4¾ X 2¾ X 1	124 X 73 X 25
10489	SB488MC	Dual Angle Med./Coarse	4¾ X 2¾ X 1	124 X 73 X 25
10491	SB491F	LG Fine	4¾ X 2¾ X 1	124 X 73 X 25
10492	SB491MF	LG Med./Fine	4¾ X 2¾ X 1	124 X 73 X 25
10493	SB491MC	LG Med./Coarse	4¾ X 2¾ X 1	124 X 73 X 25

W Sanding Blocks **NEW**

- For finish sanding of drywall, plaster and spackling compounds
- Block shape is easy to hold
- Cleans easily, reusable
- Sold as a 2 pack
- Sold 1 per inner pack/10 per outer pack

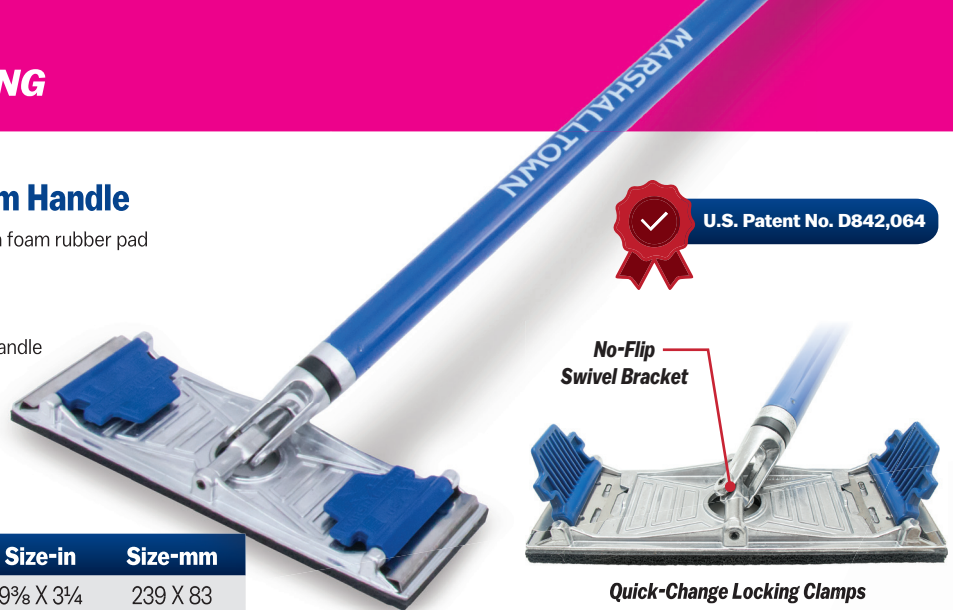


EDI	Part#	Description	Size-in	Size-mm
40567	SB491FW	Sngl. Angle Fine	3 X 5 X 1	76 X 127 X 25
40569	SB491MW	Sngl. Angle Medium	3 X 5 X 1	76 X 127 X 25
40571	SB491CW	Sngl. Angle Coarse	3 X 5 X 1	76 X 127 X 25
40573	SB488FW	Dual Angle Fine	3 X 5 X 1	76 X 127 X 25
40575	SB488MW	Dual Angle Medium	3 X 5 X 1	76 X 127 X 25
40577	SB488CW	Dual Angle Coarse	3 X 5 X 1	76 X 127 X 25

M Pole Sander with Aluminum Handle

- Made of reinforced die-cast aluminum bonded to a foam rubber pad
- Quick-change locking clamps
- Includes lightweight aluminum handle
- End of handle is threaded for use with extension handle
- Low-profile, no-flip swivel bracket
- Used for sanding drywall joints
- Sold 8 per inner pack/8 per outer pack

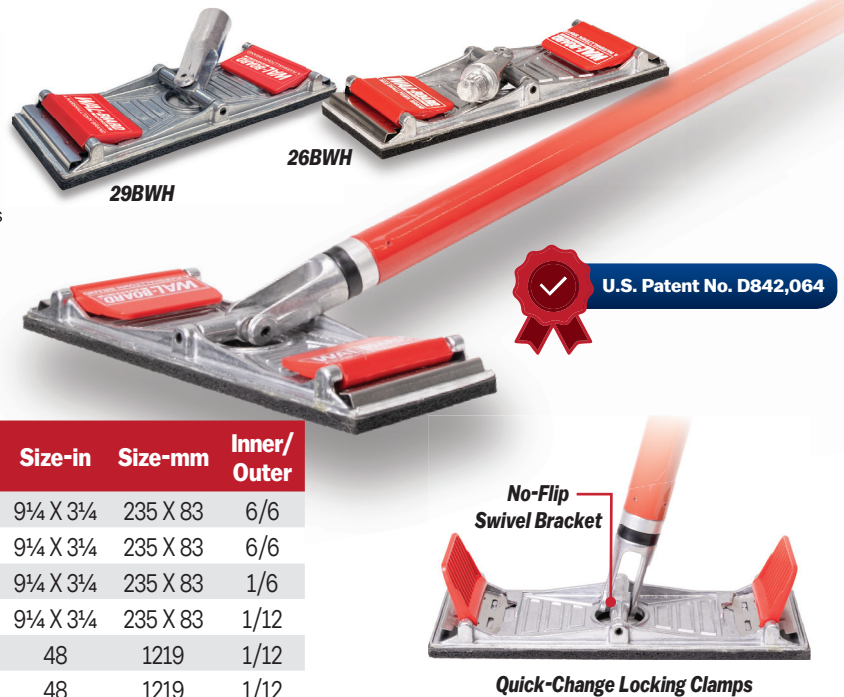
EDI	Part#	Description	Size-in	Size-mm
28243	26B	Sander w/Handle	9 3/4 X 3 1/4	239 X 83



W Pole Sander **NEW**

- Die-cast aluminum plate measuring 9 1/4 X 3 1/4" (235 X 83 mm) with reinforced ridges to prevent bowing
- Polyethylene pad
- 48" (1219 mm) hardwood handle with steel cap for setting nails
- Hold several sheets of die-cast sandpaper at once
- Available as a single pole sander or the sander head only
- Sold 6 per inner pack/6 per outer pack

EDI	Part#	Description	Size-in	Size-mm	Inner/Outer
40508	26BW	Sander (Male Threads) w/Hdl	9 1/4 X 3 1/4	235 X 83	6/6
40688	29BW	Sander (Female Threads) w/Hdl	9 1/4 X 3 1/4	235 X 83	6/6
40511	26BWH	Sander Head - Male Threads	9 1/4 X 3 1/4	235 X 83	1/6
40512	29BWH	Sander Head - Female Threads	9 1/4 X 3 1/4	235 X 83	1/12
40515	48ALUMW	Threaded Hdl - Female Threads	48	1219	1/12
40652	48ALUMBW	Threaded Hdl - Male Threads	48	1219	1/12



W Plastic Pole Sander **NEW**

- Made from lightweight injection molded plastic
- Quick-change locking clamps
- Durable and inexpensive
- For use with die-cut or a half sheet of standard sand paper
- Can be used with any standard 3/4" (19 mm) broom handle
- Used for sanding drywall joints
- Sold 6 per inner pack/6 per outer pack



EDI	Part#	Description	Size-in	Size-mm
40505	260PW	Plastic Pole Sander	9 1/4 X 3 1/4	235 X 83

W Pole Sander **NEW**

- Made of reinforced die-cast aluminum bonded to a foam rubber pad
- Fast, positive clamps lock securely to hold the sandpaper in place
- Used for sanding drywall joints
- Combining this sander with our 28 or 28L pole sander handle permits sanding anywhere
- PS660 sold 10 per inner pack/50 per outer pack
- PS660A includes 28 handle, sold 18 per inner pack/18 per outer pack



EDI	Part#	Description	Size-in	Size-mm
14660	PS660	Sander Head	9 3/8 X 3 1/4	239 X 83
14680	PS660A	Sander w/Handle	9 3/8 X 3 1/4	239 X 83

W Radial Pole Sander **NEW**

- No-flip swivel bracket
- Rubber ring won't gouge walls
- Quick-change hook and loop design
- Sanding head is twice the size of standard rectangular heads, covering more surface area per stroke
- Use with handle **48ALUMBW** - see next page for details (sold separately)
- Sand paper sold separately - see page 363 for details
- Sold 6 per inner pack/6 per outer pack



EDI	Part#	Size-in	Size-mm
40541	RPS9WH	9	229

SCAN FOR VIDEO

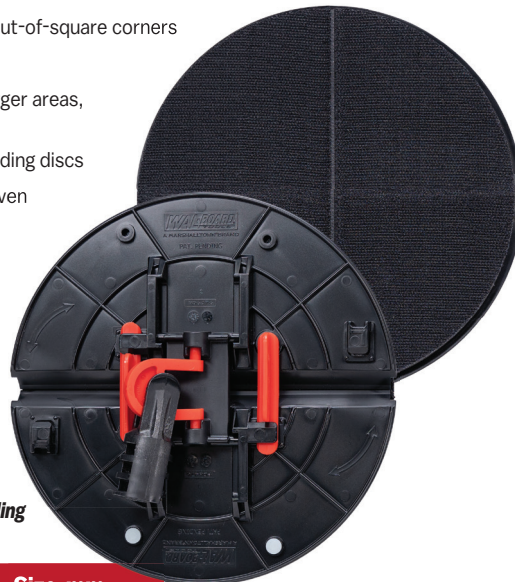


W Folding Radial Sander **NEW**

- Eliminates additional tools, saving time and money on the job
- Folds to 90° for inside corner sanding or as tight as 85° for out-of-square corners
- Locks flat for wall sanding
- Features a 9" (229 mm) circular sanding head that covers larger areas, decreasing time spent sanding
- Compatible with standard 9" (229 mm) diameter drywall sanding discs
- Hook-and-loop faced ¾" (6 mm) foam pad aids in applying even pressure and allows for quick changing of sandpaper
- Standard ¾" -5 ACME broom thread fits standard extension poles and broom handles
- U-Joint attachment swivels for even sanding in all directions
- Sandpaper sold separately - see page 363 for details
- Sold 1 per inner pack/4 per outer pack



85°-180°



Patent Pending



EDI	Part#	Size-in	Size-mm
40535	FRSHC	9	229

W Aluminum Pole Sander Handle **NEW**

- Made from lightweight aluminum
- Acme threaded end accepts extension handles
- **48ALUMW** For use with **29BWH** (see page 402)
- **48ALUMBW** for use with **26BWH** and **RPS9HW** (see pages 402 - 403)
- Sold 1 per inner pack/12 per outer pack



EDI	Part#	Threads	Size-in	Size-mm
40515	48ALUMW	Female	48	1219
40652	48ALUMBW	Male	48	1219

M Pole Sander Handles & Extension Poles

- Several poles to choose from
- Multiple sizes and materials
- For details see page 360 - 361



M Wall Repair Patch Kit Clip Strip

- No-rust aluminum plate provides rigid backing
- Self-adhesive patches
- Fiberglass mesh eliminates the need to pre-plaster
- Includes:
 - (12) **DP6** 6 X 6" (152 X 152 mm) MARSHALLTOWN Wall Repair Patch Kits
 - Clip Strip Display
 - Hook
- Sold 1 per inner pack/30 per outer pack



EDI	Part#	Description	Size-in	Size-mm
28393	DP6CS	Pack of 12 w/Clip Strip	6 X 6	152 X 152

W Drywall Patch Kit Rack

- For details see page 454

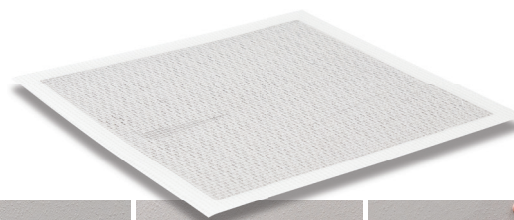


W Drywall Repair **NEW** Patches

- No-rust aluminum plate provides rigid backing
- Self-adhesive patches
- Fiberglass mesh eliminates the need to pre-plaster
- Sold 24 per inner pack/ 24 per outer pack



EDI	Part#	Size-in	Size-mm
40214	054-005	4 X 4	102 X 102
40215	054-006	6 X 6	152 X 152
40216	054-007	8 X 8	203 X 203

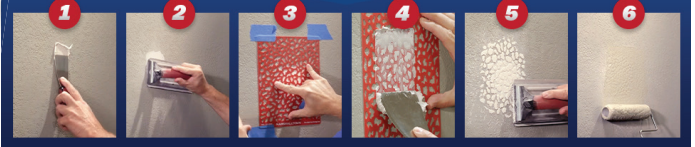


Texture Repair Stencils

- Easily applies light, medium, or heavy knockdown texture to walls and ceilings
- Durable plastic material
- Reusable and easy to clean
- Ideal for DIYers, homeowners, and professionals
- 8 X 10½" (203 X 267 mm) stencil size
- Sold 1 per inner pack/12 per outer pack



PATCH DRYWALL TEXTURE IN 6 EASY STEPS!



**REUSABLE
AND EASY TO
CLEAN**

Texture Repair Stencils **NEW**

- Easily applies light, medium, or heavy knockdown texture to walls and ceilings
- Durable plastic material
- Reusable and easy to clean
- Ideal for DIYers, homeowners, and professionals
- 8 X 10½" (203 X 267 mm) stencil size
- Sold 1 per inner pack/12 per outer pack



SCAN FOR VIDEO

EDI	Part#	Description	Size-in	Size-mm
40667	KDSRW	Regular Knockdown	8 X 10½	203 X 267
40668	KDSHW	Heavy Knockdown	8 X 10½	203 X 267
40669	KDSLW	Light Knockdown	8 X 10½	203 X 267

Texture Repair Sponges

- Replicates orange peel or knockdown textures
- Use with regular drywall compound
- Can use with WAL-BOARD Drywall Repair Patches see page 404
- Easy to use; perfect for DIYer's and professionals
- Sold 6 per inner pack/6 per outer pack (clip strip included)



EDI	Part#	Description
28688	TSKOK	One Orange Peel & One Knockdown Sponge

Texture Repair Sponges **NEW**

- Replicates orange peel or knockdown textures
- Use with regular drywall compound
- Can use with WAL-BOARD Drywall Repair Patches see page 404
- Easy to use; perfect for DIYers and professionals
- Sold 6 per inner pack/6 per outer pack (clip strip included)



SCAN FOR VIDEO

EDI	Part#	Description
40683	TSKOKW	One Orange Peel & One Knockdown Sponge

M USA Trim Guides **NEW**

- Allows for precise cutting lines when painting against trim, windows, walls, and ceilings
- Protects against splatter and over-painting
- Stainless steel blade is easy to clean and durable
- Reduces need for extra taping on paint or wallpaper
- Sold 1 per inner pack/10 per outer pack



EDI	Part#	Description	Size-in	Size-mm
29200	24TG	24" Trim Guide	24	610
29202	12TG	12" Trim Guide	12	51

M USA Premium Paint Brush Comb

- Recommended for maintaining maximum brush performance
- Stainless steel comb cleans and straightens brush bristles
- Brass wire bristles gently removes heavy paint build up
- Paint can rim cleaner removes excess paint from can rim to allow for air tight seal during storage
- Hammering end
- Sold 1 per inner pack/12 per outer pack



EDI	Part#	Description
29259	PBC	Premium Paint Brush Comb

QLT Paint Brush Comb

- Recommended by most brush manufacturers for maintaining maximum brush performance
- Comb through brush bristles to clean and straighten before storage
- High-density polyethylene handle will not absorb water or solvents
- Redesigned with roller cleaner
- Sold 12 per inner pack/144 per outer pack



EDI	Part#	Size-in	Size-mm
19774	E6125	N/A	N/A

M USA Window Glass Scraper

- Used to scrape windows, glass tile, ceramic tile and more
- Soft grip handle
- Push button opening and locking action
- Uses MARSHALLTOWN WGS35RB replacement blades
- Sold 1 per inner pack/12 per outer pack, 24 per outer pack where noted with *



EDI	Part#	Description
29206	WGS35	3½" (89 mm) Window Glass Scraper
29208	WGS35RB*	3½" (89 mm) Window Glass Scraper Blades - 3 Pack

M USA DuraSoft® Scraper

- Accepts standard single-edge razor blades
- DuraSoft® handle for increased comfort and reduced fatigue
- Comes with 10 replacement blades
- One display box contains 8 individually packaged knives
- Sold 12 per inner pack/48 per outer pack



EDI	Part#	Size-in	Size-mm
19074	9074	6	152

Mini Glass Scraper

- Allows for scraping in hard-to-reach places
- Lightweight and economical
- Reversible blade for safe storage
- Accepts standard single-edge razor blades
- Sold 1 per inner pack/24 per outer pack



EDI	Part#	Description
29196	9056MGS	Mini Glass Scraper

Soft Grip Glass Scraper

- Ideal for removing old paint and adhesive from windows, glass, tile and more
- Includes 5 single-edge replacement blades
- Safety locking mechanism
- Sold 1 per inner pack/12 per outer pack



EDI	Part#	Description
29198	GS198	Soft Grip Glass Scraper

Window Glass Scraper Kit

- Ideal for removing old paint and adhesive from windows, glass, tile and more
- Kit includes:
 - 3½" (89 mm) Glass Scraper
 - Mini Glass Scraper
 - 5-Pack Single-Edge Blade Dispenser
 - 3-Pack 3½" (89 mm) Replacement Blades
 - Fixed Glass Scraper
- Sold 1 per inner pack/10 per outer pack



EDI	Part#	Description
29210	WGSKIT	Window Glass Scraper Kit

Single-Edge Blade Dispenser

- Single-edge blades fit handheld window and paint scrapers
- Ideal for removing old paint and adhesive from windows, glass, tile and more
- Comes in a convenient plastic dispenser
- Fits knives **9056** and scrapers **GS198, 9074, 9056MGS**
- Sold 1 per inner pack/24 per outer pack



EDI	Part#	Description	Qty
29204	GSB10	Single-Edge Blade Dispenser	10

Razor Blades

- Single-edge blades fit handheld window and paint scrapers
- Ideal for removing old paint and adhesive from windows, glass, tile and more
- Comes in packs of 100 or 50
- Fits knives **9056** and scrapers **GS198, 9074, 9056MGS**
- Sold 1 per inner pack/12 per outer pack



EDI	Part#	Description	Qty
29228	GSB100	Razor Blades	100
29230	GSB50	Razor Blades	50

Razor Blades

- Merchandiser holds 2 display boxes (40 packs of 5 blades)
- Inner/outer pack quantities are shown in table



EDI	Part#	Description	Inner/Outer
19625	E397	Pkg of 100 Blades	10/50
19626	E398	2 Packs of 5 Blades	10/200
19627	E399	Blade Merchandiser	1/1

WE ARE JUST A PHONE CALL AWAY!

Our dedicated Customer Success Team is ready to assist you with your questions, concerns, and technical support needs - Just give us a call!

 **800.888.0127**

 Or send us an email at: **CustomerSuccess@MARSHALLTOWN.com**

Bent 3" Scraper

- Highly polished stainless steel blade
- DuraSoft® handle with threaded end to accept standard broom handles
- For removing vinyl flooring, carpet, wallpaper, and adhesives
- Sold 5 per inner pack/
5 per outer pack



EDI	Part#	Size-in	Size-mm
28251	E91D	3 X 10	76 X 254

4" Wall and Floor Scraper

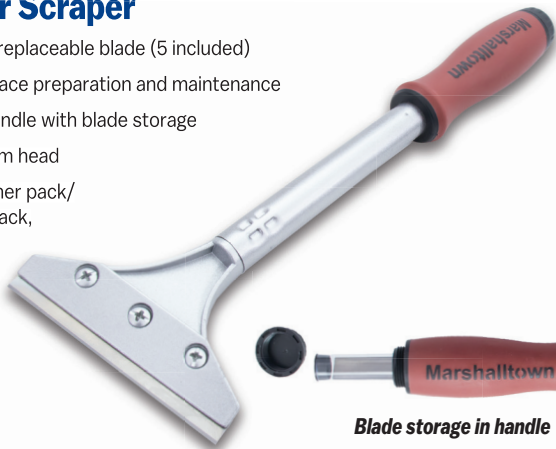
- 4" (102 mm) replaceable blade
- Strips and removes wallpaper, paint, and varnish
- Offset blade for optimum scraping angle
- Use for cleaning glass, tile, and floors
- Inner/outer quantities shown in table
- Sold 12 per inner pack/
36 per outer pack



EDI	Part#	Description	Size-in	Size-mm
17475	WFS448	Scraper	48"	1219

Razor Scraper

- 4" (102 mm) replaceable blade (5 included)
- Used for surface preparation and maintenance
- DuraSoft® handle with blade storage
- Cast aluminum head
- Sold 6 per inner pack/
6 per outer pack,
blades sold
12 per inner
pack/12 per
outer pack



EDI	Part#	Description	Size-in	Size-mm
28252	WFS49D	Scraper	4 X 9	102 X 229
28253	WFS49DB	5 Repl. Blades	4	102

Heavy-Duty Scrapers

- Sharp 4" (102 mm) wide blade for stripping hard to remove floor covering and adhesives
- Heavy-duty aluminum construction
- Double sided, hardened steel blade
- Easy-to-replace blade
- Scraper size refers to handle length
- Inner/outer pack quantities shown in table



EDI	Part#	Size-in	Size-mm	Inner/Outer
10469	SC448	48	1219	6/18
10470	SCBLADE	4	102	10/100

Wallpaper Stripper

- Heavy-gauge, die cast construction
- Razor sharp 4" (102 mm) blade, angle mounted
- Ergonomic 13½" (343 mm) handle
- Sold 6 per inner pack/
6 per outer pack



EDI	Part#	Description	Size-in	Size-mm
19634	E440	Scraper	4	102

2-in-1 Caulk Tool **NEW**

- Ideal for smoothing, scraping, and spreading putty or caulk
- V-blade end is used to remove caulk or fill putty into cracks and gaps
- Flat chisel end works well to push, fill, and then smooth putty; also used to pry glazing points
- Zinc-plated steel blade construction
- Equipped with a slim DuraSoft® handle
- Sold 1 per inner pack/
12 per outer pack



EDI	Part#	Description
29290	CT21	2-in-1 Caulk Tool

Soft Grip Paint Scrapers

- Can be used for wood or paint
- For easy removal of paint or other finishes
- Soft grip handle
- 2 or 4 edged blade
- Replacement blades available
- Inner/outer pack quantities listed in table

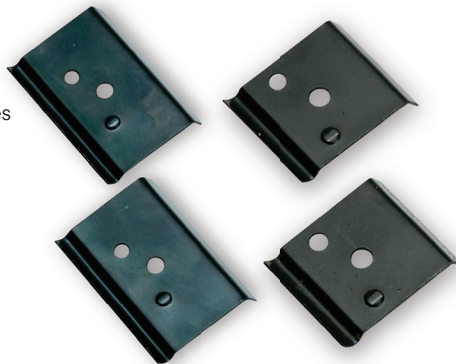


EDI	Part#	Size-in	Size-mm	Inner/Outer
11051	PS1S2	1	25	6/72
11052	PS112S2	1½	38	6/72
11053	PS212S2	2½	64	6/72
11050	PS212S4	2½	64	4/24
11054	PS3S4	3	76	4/24

Replacement Blades				
EDI	Part#	Size-in	Size-mm	Inner/Outer
11055	PS1SRB	1	25	24/144
11056	PS112SRB	1½	38	24/144
11057	PS212S2RB	2½	64	12/144
11058	PS212S4RB	2½	64	12/144
11059	PS3S4RB	3	76	12/144

Paint Scraper Replacement Blades

- Can be used on wood or paint
- For easy removal of paint or other finishes
- Sold 2 per card
- Inner/outer pack quantities listed in table



EDI	Part#	Size-in	Size-mm	Inner/Outer
11048	PS112WRB	1½	38	24/144
11049	PS212WRB	2½	64	12/144

Stainless Steel Wire Brush

- Ideal for heavy-duty scrubbing and rust removal
- Ergonomic soft grip handle for comfortable grip
- Narrow nose profile for hard-to-reach places and corners
- Bristles are 4 X 12 rows
- Sold 1 per inner pack/ 12 per outer pack



EDI	Part#	Description
29212	WB212	Stainless Steel Wire Brush

Nylon Wire Brush

- Nylon bristles for gentle cleaning on surfaces such as grout, tile, windows and around tubs and sinks
- Narrow nose profile for hard-to-reach places and corners
- Bristles are 4 X 12 rows
- Sold 1 per inner pack/ 12 per outer pack



EDI	Part#	Description
29214	NWB214	Nylon Wire Brush

Wire Brush Kit

- Kit of three detail brushes to clean paint, dirt and scale off hard surfaces
- Ideal offset handle placement for hard-to-reach areas
- Set includes:
 - Nylon bristle brush - Ideal for gentle cleaning
 - Brass bristle brush - Ideal for aggressive cleaning on metal surfaces
 - Stainless steel bristle brush - Ideal for heavy-duty scrubbing and rust removal
- Sold 1 per inner pack/12 per outer pack



EDI	Part#	Description
29220	WBKIT3	Wire Brush Kit - 3 Pack

Economy Block Wire Scrub Brush

- Ideal for removing paint, scale or rust
- Ergonomic handle for aggressive scraping
- Sold 1 per inner pack/ 8 per outer pack



EDI	Part#	Description
29226	BWB226	Economy Block Wire Scrub Brush

Block Wire Scrub Brush

- Heavy-duty steel bristles ideal for removing paint, scale or rust
- Threaded insert for use with standard threaded pole (sold separately)
- Ergonomic soft grip handle for comfortable grip and maximum control
- Bristle rows are 6 W X 19 L
- Sold 1 per inner pack/8 per outer pack



EDI	Part#	Description
29224	BWB224	Block Wire Scrub Brush

Long Handle Wire Brush w/ Scraper

- Heavy-duty steel bristles ideal for removing paint, scale or rust
- Long, ergonomic soft grip handle for comfortable grip
- High carbon steel scraper perfect for removal of decals, stickers and other tough-to-remove adhesives
- Bristle rows are 3 W X 19 L
- Sold 1 per inner pack/8 per outer pack



EDI	Part#	Description
29222	WB222	Long Handle Wire Brush w/Scraper

Steel Shoe Handle Wire Brush

- Heavy-duty steel bristles ideal for removing paint, scale or rust
- Ergonomic soft grip handle and finger grips for comfortable grip and maximum control
- Offset handle placement for hard-to-reach areas
- Bristle rows are 4 W X 18 L
- Sold 1 per inner pack 12 per outer pack



EDI	Part#	Description
29218	WB218	Steel Shoe Handle Wire Brush

Carbon Steel Wire Brush w/Scraper

- Domestic hardwood handle
- Tempered spring steel filaments
- Used for removing semi-dry concrete from tools and forms, surface prep or chemical paint removal
- Bristle rows are 4 W X 16 L
- Sold 1 per inner pack/ 12 per outer pack



EDI	Part#	Size-in	Size-mm	Bristle Size
16518	6518	10 X 1	254 X 25	1 1/8" (29 mm)

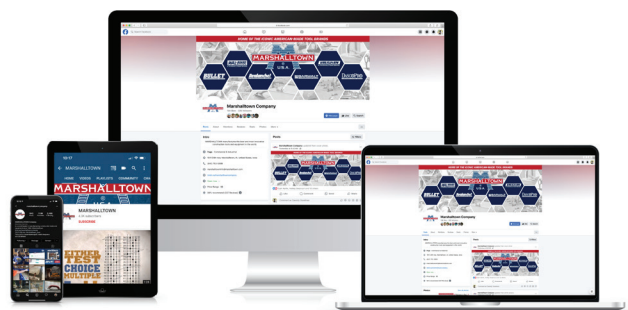
3-in-1 Stripping Brush

- Handle includes durable scraping end
- Nylon bristles are chemical resistant
- Steel bristles are ideal for cleaning paint and scale from hard surfaces
- Sold 1 per inner pack/ 12 per outer pack



EDI	Part#	Description
29216	SB31	3-in-1 Stripping Brush

Connect with us!



FOR MORE INFORMATION VISIT
www.MARSHALLTOWN.com

QLT Wire Brushes

- Tempered spring steel or brass filaments
- Used for removing semi-dry concrete from tools and forms, asbestos removal, surface prep or chemical paint removal
- Sold 12 per inner pack/48 per outer pack



EDI	Part#	Description	Size-in	Size-mm	Bristle Size	Bristle Rows
19628	E404	Steel/28 ga.	7¼ X 2¼	184 X 57	1¾" (44 mm)	6 wide X 19 long
19629	E406	Brass/32 ga.	13¼ X 1	349 X 25	1½" (29 mm)	3 wide X 19 long
19631	E408	Steel/33 ga.	14 X 1½	356 X 29	1½" (29 mm)	4 wide X 18 long
19632	E409	Steel/28 ga. w/Scraper	11 X 1½	279 X 38	1½" (41 mm)	4 wide X 10 long
19633	E410	Steel/33 ga. w/Scraper	14 X 1	356 X 25	1½" (29 mm)	3 wide X 19 long
16649	6649	Steel w/Scraper	10 X 1	254 X 25	1½" (29 mm)	4 wide X 16 long

QLT Paste Brush

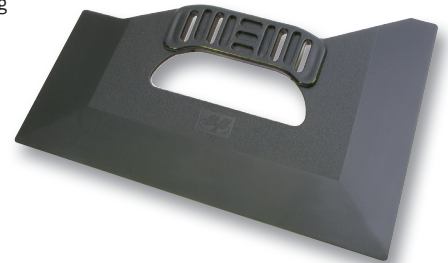
- 6" (152 mm) wood handle with hanging hole
- 3½" (79 mm) white Tampico bristles, 2 rows
- Sold 12 per inner pack/12 per outer pack



EDI	Part#	Size-in	Size-mm
19705	E2002	N/A	N/A

QLT Triple Edge Knife

- Textured handle for better grip
- Used for taping, scraping and trimming
- Made of durable plastic
- Sold 30 per inner pack/30 per outer pack



EDI	Part#	Size-in	Size-mm
16290	TEK290	10 X 6	254 X 152

QLT Stainless Steel Seam Rollers

- 1½" (29 mm) head designed to push through commercial materials
- High-density polyethylene core will not wear
- Resilient DuraSoft® handle provides a soft feel, reduces fatigue and offers excellent durability
- Sold 6 per inner pack/6 per outer pack

E226D

E225D



EDI	Part#	Description	Size-in	Size-mm
19602	E225D	Flat	2	51
19603	E226D	Sidearm Flat	1½	38

QLT Solid Rubber Seam Roller

- Medium firm rubber roller is versatile and rugged
- Use on string, grass cloth, expanded vinyl and embossed wallcovering
- Resilient DuraSoft® handle provides a soft feel, reduces fatigue and offers excellent durability
- Sold 6 per inner pack/6 per outer pack



EDI	Part#	Description	Size-in	Size-mm
19560	E54D	Flat	2	51

Solid Maple Seam Rollers

- Polished hard maple roller for no-track seams and better hold
- Wear-resistant, outer pack hardened, plated axle and rust-resistant frame
- Resilient DuraSoft® handle provides a soft feel, reduces fatigue and offers excellent durability
- Sold 6 per inner pack/ 6 per outer pack



EDI	Part#	Description	Size-in	Size-mm
19571	E98D	Flat	1	25
19564	E83D	Flat	2	51

Professional Gemstone Plastic Seam Roller

- High-density polyethylene head won't split or wear out-of-round
- Head individually machined for perfect concentricity and smooth running
- Wear-resistant, outer pack hardened, plated axle and rust-resistant frame
- Resilient DuraSoft® handle provides a soft feel, reduces fatigue
- Sold 6 per inner pack/6 per outer pack



EDI	Part#	Description	Size-in	Size-mm
19600	E216D	Flat	2	51

Flat Plastic Seam Roller

- 1" (25 mm) wide flat plastic roller
- Sidearm design lessens frame interference in tight spaces
- Soft grip handle
- Sold 6 per inner pack/ 6 per outer pack
- **SR593B** sold in bulk packs of 100



EDI	Part#	Description	Size-in	Size-mm
18593	SR593	Flat	1	25
18594	SR593B	Flat	1	25

Soft Grip Shears

- Soft grip handles
- Stainless steel blades
- For right- or left-handed cutting
- Sold 6 per inner pack/ 144 per outer pack



EDI	Part#	Size-in	Size-mm
19482	E119	11	279

Heavy-Duty Professional Shears

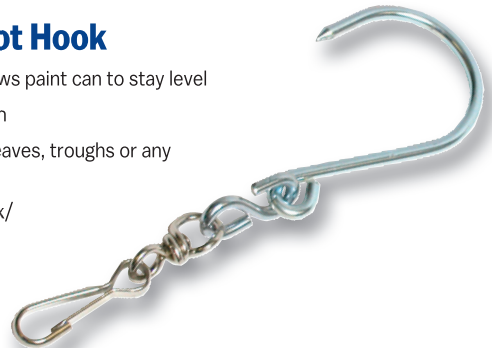
- Designed for 54" (1372 mm) commercial wallcovering
- Bent handle shear
- Hot, drop forged, plated
- Sold 1 per inner pack/ 132 per outer pack



EDI	Part#	Size-in	Size-mm
19569	E96	10	254

Swivel Pot Hook

- Swivel pot hook allows paint can to stay level
- Snaps onto paint can
- Secure on ladders, eaves, troughs or any convenient place
- Sold 1 per inner pack/ 12 per outer pack



EDI	Part#	Description	Size-in	Size-mm
29232	SPH232	Swivel Pot Hook	6	152



M Combination Graining Tool

- Solid, molded plastic design
- Detachable handle and graining surface for easy cleaning
- Easy to simulate beautiful grain on wood and metal
- Instruction booklet included
- **E6151** sold 6 per inner pack/ 6 per outer pack;
E6151-1 comes in bulk of 150,
sold 1 inner pack/outer pack



EDI	Part#	Size-in	Size-mm
19775	E6151	N/A	N/A
19529	E6151-1	N/A	N/A

M Bucket Opener

- Sturdy molded plastic
- Removes 5 gallon plastic pail lids quickly and easily
- Sold 6 per inner pack/ 6 per outer pack



EDI	Part#	Size-in	Size-mm
19662	E740	¾ X 8¾	19 X 209

QLT Rubber Grout Gloves

- Use when grouting tile
- Protects hands from Portland cement and other chemicals
- Latex rubber gloves
- Sold 6 per inner pack/ 60 per outer pack



EDI	Part#	Size
28282	RGL	Large

M Lift Lender™ — Carry All

- For details see page 449



M 5 Gallon Bucket

- For details see page 447



W Aluminum Folding Bench **NEW**

- For details see page 450



Single Line Stripers

- Roll out permanent lines and stripes easily and quickly on any smooth surface including paper, wood, glass and metal
- Works with enamel, lacquer, bronze, and glue
- Equipped with adjustable line guide
- Interchangeable wheel tip assemblies ranging in width from 1/64" to 1/4" (.4 mm to 6 mm)
- Complete with easy-to-follow instructions
- **E1080** kit includes one single line striper and all eight interchangeable wheels
- Sold 6 per inner pack/6 per outer pack



EDI	Part#	Size-in	Size-mm
19664	E1001	1/64	.4
19665	E1002	1/32	.8
19666	E1003	3/64	1
19667	E1004	1/16	1.5
19668	E1005	5/64	2
19669	E1006	3/32	2.5
19670	E1007	1/8	3
19671	E1008	1/4	6
19680	E1080	N/A	N/A

Extra Wheel Tip Assemblies

EDI	Part#	Size-in	Size-mm
19672	E1011	1/64	.4
19673	E1012	1/32	.8
19674	E1013	3/64	1
19675	E1014	1/16	1.5
19676	E1015	5/64	2
19677	E1016	3/32	2.5
19678	E1017	1/8	3
19679	E1018	1/4	6

Line Striper Accessories

- **E1202 & E1203** come two per card; sold 6 cards per inner pack/6 cards per outer pack
- **E1204** sold uncarded
- Line striper adapter replaces bottle when tool is used with a 1/4" (6 mm) hose, sold 1 per inner pack/1 per outer pack
- Line striper gasket come six per card, sold 6 cards per inner/outer pack



EDI	Part#	Description	Size
19683	E1202	Capped Bottle—Glass	1/2 oz
19684	E1203	Capped Bottle—Plastic	1 oz
19685	E1204	Capped Bottle—Glass	4 oz
19686	E1205	Striper Adapter	N/A
19687	E1207	Six Striper Gaskets	N/A

Get the latest tips, tools & articles from MARSHALLTOWN WORKSHOP



Scan the code or visit marshalltown.com/blog